

AVENUE

Avenue™ signal integration system

Model 7940 SD Aspect Ratio Converter Data Pack

ENSEMBLE

D E S I G N S

Revision 1.3 SW v2.3.3

This data pack provides detailed installation, configuration and operation information for the **7940 SD Aspect Ratio Converter (ARC)** module as part of the Avenue Signal Integration System.

The module information in this data pack is organized into the following sections:

- Module Overview
- Applications
- Installation
- Cabling
- Module Configuration and Control
 - Front Panel Controls and Indicators
 - Avenue PC Remote Control
 - Avenue Touch Screen Remote Control
- Troubleshooting
- Software Updating
- Warranty and Factory Service
- Specifications

MODULE OVERVIEW

The 7940 module is an aspect ratio converter for standard definition signals. One SD input feeds four SD outputs or two of the SD output BNCs can be configured as either SD or composite outputs by setting switches on the module circuit board. For an overview of the module, refer to the functional block diagram on the next page.

Resizing and repositioning include choices for Letterbox (16:9 and 14:9), Anamorphic, Crop, WSS Auto and Manual. The Manual mode allows the user to set the aspect ratio as desired with a separate group of controls. For an overview of the module, refer to the functional block diagram on the next page.

The 7940 supports WSS (Wide Screen Signaling), VLI (Video Line Index), and other methods used to mark or identify the aspect ratio of the video content. These flags are generated at the output of the module, and they are read at the input. This allows the aspect ratio converter to adapt automatically to material that is already in letterbox or pillarbox form in order to produce the most appropriate conversion.

Vertical Interval data is faithfully preserved and closed caption data from the input can be passed directly to the outputs. Controls for controlling timecode choices are also available. The module output is synchronized and timeable with respect to the reference input.

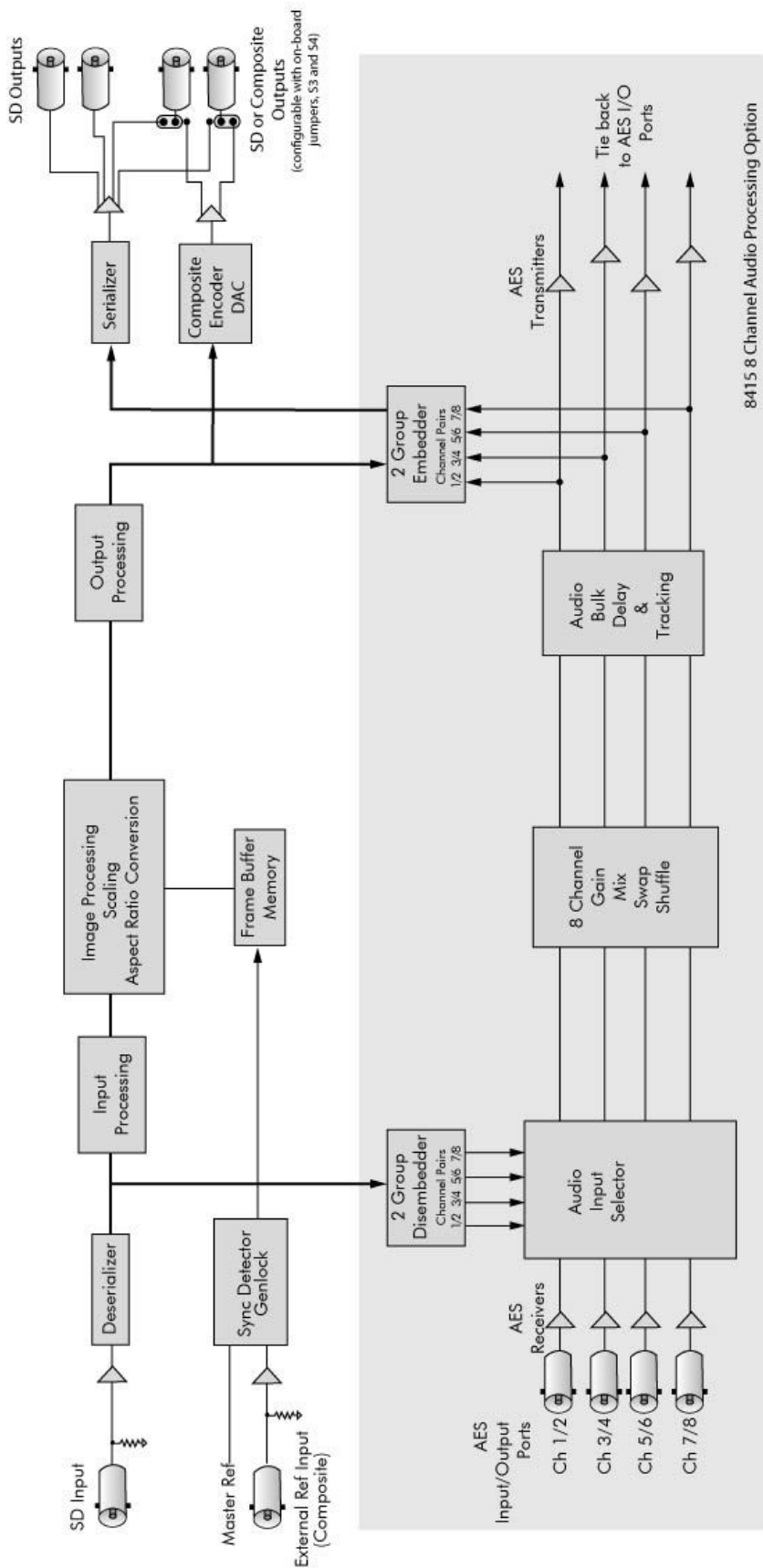
The 8415 Audio Processor submodule option shown in the block diagram provides management of embedded audio in the processing path, or to support audio embedding/disembedding alongside the video processing elements. Embedded audio is safely bypassed around the video frame store with the lip sync preserved. Level adjustment and channel shuffling are accessed through the built-in audio mixer.

The 7940 can be configured locally or controlled and configured remotely with Avenue Touch Screens, Express Panels, or Avenue PC Software. Alarm generators, configurable user levels, module lock out, and customizable menus are just some of the tools included in the Avenue Control system.

The on-board CPU can monitor and report module ID information (slot location, software version and board revision), power status, and ancillary data status to the optional frame System Control module. This information can be accessed by the user or set to register an alarm if desired using the remote control options available.

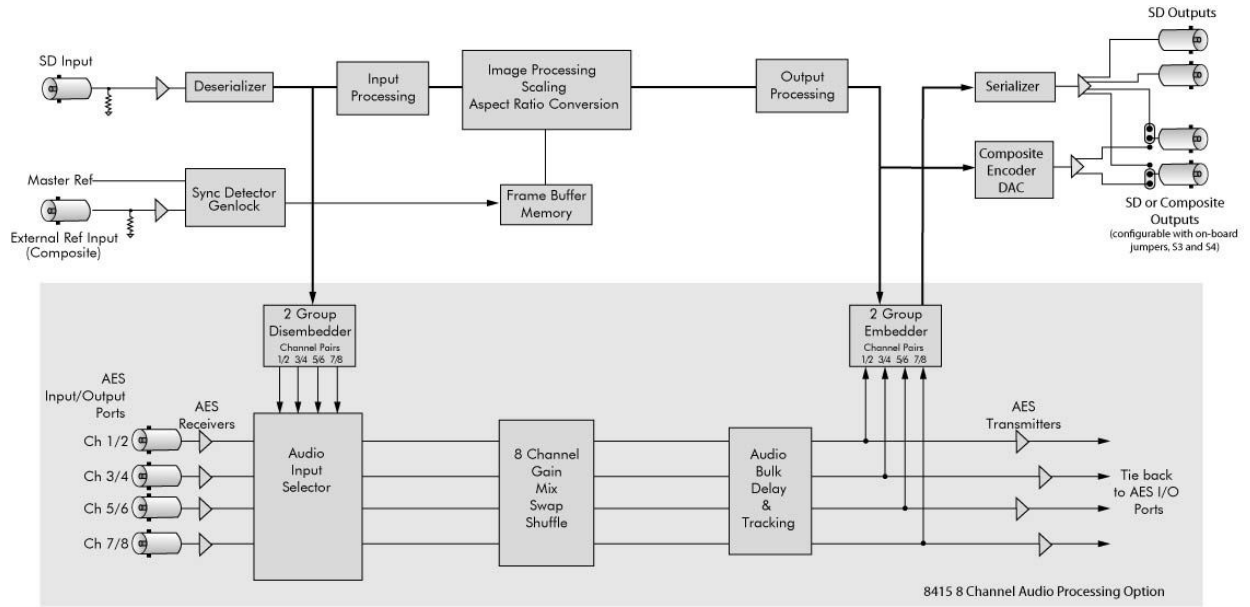
Modules at software version 2.2.0 or later support SNMP (Simple Network Management Protocol) monitoring. For each applicable signal processing module, module, signal, and reference status are reported. For complete details on using SNMP monitoring, refer to the **Avenue System Overview** in the manual that accompanies each frame.

Power is derived from the ± 12 volt frame power. It is regulated to the required +5 volts for the module by on-board regulator. The module is fused with a resettable fuse device. If the fuse opens due to an overcurrent condition, the module will lose power. After pulling the module, the fuse will reset automatically requiring no replacement fuse.



7940 Aspect Ratio Converter Functional Block Diagram, Landscape View

Model 7940 SD Aspect Ratio Converter



7940 Aspect Ratio Converter Functional Block Diagram, Portrait View

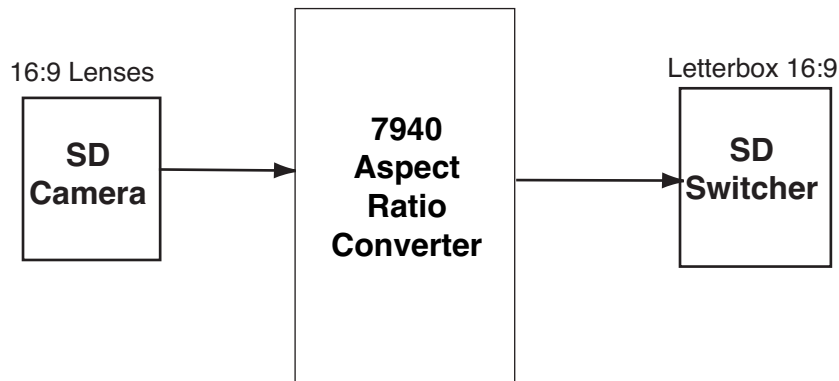
(This page is intentionally blank.)

APPLICATIONS

SD Aspect Ratio Conversion

The 7940 module is a standard definition aspect ratio converter that can be utilized to convert the aspect ratio of the SD input signal to a different aspect ratio needed on the output.

In the example shown below, the input from an SD camera with 16:9 lenses can be fed to the 7940 where the aspect ratio can be corrected for feeding an SD switcher requiring an aspect ratio of Letterbox 16:9.



7940 SD ARC Application

INSTALLATION

8415 Submodule Installation

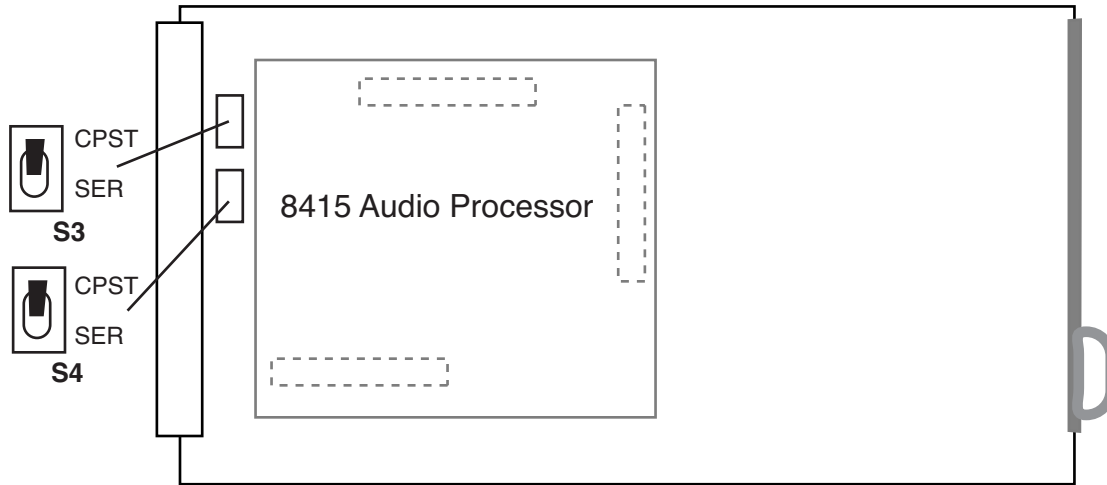
The optional 8415 8 Channel Audio Processor submodule installs on the component side of the 7940 module circuit board. If the option is ordered with the 7940 module, it will come already installed.

To install the 8415 audio submodule, locate the three connectors on the left side of the circuit board as shown on the next page and line the connectors up, checking the alignment. Press carefully into place to seat the submodule.

SD or Composite Out BNC Configuration

Two of the four SD Out BNCs (**SD Out 3** and **SD Out 4**) can be configured as either SD or composite outputs by setting switches **S3 (SD Out 3 BNC)** or **S4 (SD Out 4 BNC)**. Refer to the illustration on the next page for the locations of the switches on the rear of the circuit board. Set each switch independently to the up position for **CPST** and down for **SER**.

Set toggle switches to configure BNCs on the rear module.
S3 CPST or SER on BNC labeled SD Out 3
S4 CPST or SER on BNC labeled SD Out 4



8415 Submodule Installation and SD/Cpst BNC Configuration

7940 Video Processing Module

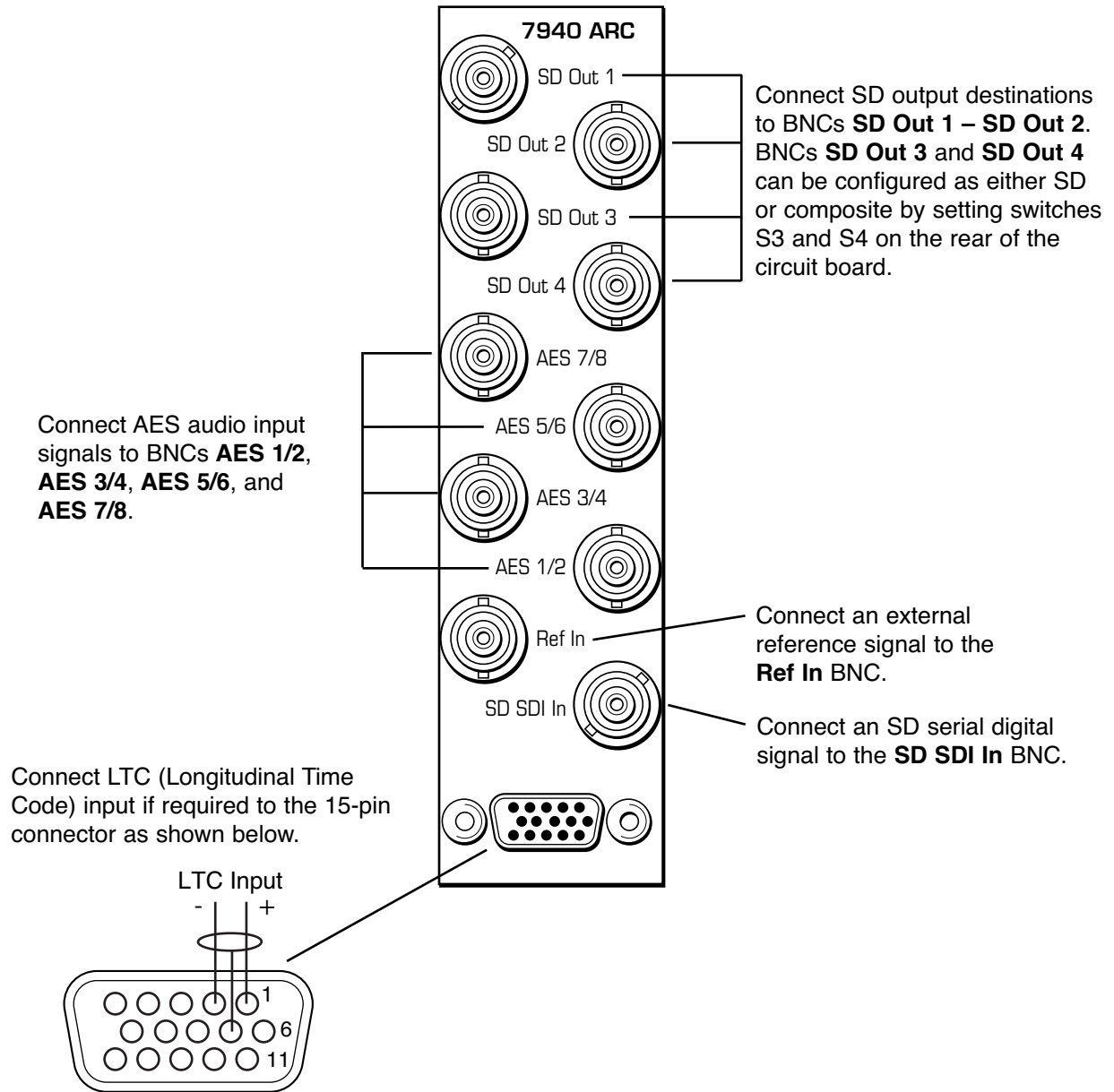
Plug the 7940 module into any one of the slots in the 1 RU or 3 RU frame and install the plastic overlay provided onto the corresponding group of rear BNC connectors associated with the module location.

Note that the plastic overlay has an optional adhesive backing for securing it to the frame. Use of the adhesive backing is only necessary if you would like the location to be permanent and is not recommended if you need to change module locations. This module may be hot-swapped (inserted or removed) without powering down or disturbing performance of the other modules in the system.

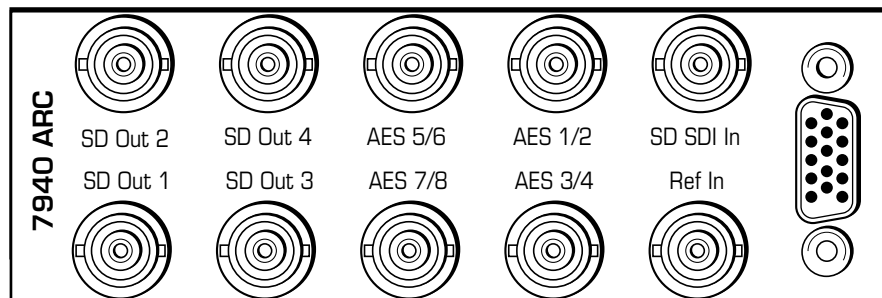
CABLING

Refer to the 3 RU and 1 RU backplane diagrams of the module below for cabling instructions. Note that unless stated otherwise, the 1 RU cabling explanations are identical to those given in the 3 RU diagram.

3RU Backplane



1RU Backplane



MODULE CONFIGURATION AND CONTROL

The configuration parameters for each Avenue module must be selected after installation. This can be done remotely using one of the Avenue remote control options or locally using the module front panel controls. Each module has a **Remote/Local** switch on the front edge of the circuit board which must first be set to the desired control mode.

The configuration parameter choices for the module will differ between **Remote** and **Local** modes. In **Remote** mode, the choices are made through software and allow more selections. The **7940 Parameter Table** later in this section summarizes and compares the various configuration parameters that can be set remotely or locally and the default/factory settings. It also provides the default User Levels for each control. These levels can be changed using the Avenue PC application

If you are not using a remote control option, the module parameters must be configured from the front panel switches. Parameters that have no front panel control will be set to a default value. The **Local** switches are illustrated in the **Front Panel Controls and Indicators** section following the **7940 Parameter Table**. The **Local** switches are inactive when the **Remote/Local** switch is in the **Remote** position.

In the **Remote** mode, Avenue module parameters can be configured and controlled from one of the remote control options, the Avenue Touch Screen, Avenue Express Control Panel, or the Avenue PC Application. Once the module parameters have been set remotely, the information is stored on the module CPU. This allows the module to be moved to a different slot in the frame at your discretion without losing the stored information.

For setting the parameters remotely using the Avenue PC option, refer to the **Avenue PC Remote Configuration** section of this document.

For setting the parameters remotely using the Avenue Touch Screen option, refer to the **Avenue Touch Screen Remote Configuration** section of this document following Avenue PC.

Express Panel operation is described in the data pack that accompanies the control panel option.

7940 Parameter Table

CONTROL	LOCAL	REMOTE	FACTORY DEFAULT	DEFAULT USER LEVEL
Reference Source	Ext Ref	Ext Ref Master Ref Video In Ref	Ext Ref	Level 1
Mode	Mode Switch1: Ana or Proc When Proc, set: Mode Switch 2: Box or Crop	Anamorphic Letter Box 16:9 Letter Box 14:9 Crop WSS Auto Manual	Anamorphic	Level 1
Output Standard	Auto	SD 525 SD 625	Auto	Level 1
Width (Manual)	100%	+/- 100%	100%	Admin
Height (Manual)	100%	+/- 100%	100%	Admin
Hor Position (Manual)	0%	+/- 100%	0%	Admin
Ver Position (Manual)	0%	+/- 100%	0%	Admin
Noise Reduce	Off	Off Low Medium High	Off	Admin
Detail	Off	Off Low Medium High	Off	Admin
3:2 Detect	Off	Off On	Off	Level 2
Gain	100%	0 – 150%	100%	Admin
Chroma	100%	0 – 150%	100%	Admin
Pedestal	0 IRE	+/- 30 IRE	0 IRE	Admin
Hue	0 IRE	+/- 180 degrees	0 degrees	Admin
Vert Blanking	Wide	Wide Narrow	Wide	Level 1
Test Pattern	Off	Off Bars Black	Off	Level 1
Hor Timing	0 clocks	+/- 2000 clocks	0 clocks	Admin
Ver Timing	0 lines	+/- 1000 lines	0 lines	Admin

7940 Parameter Table (Continued)

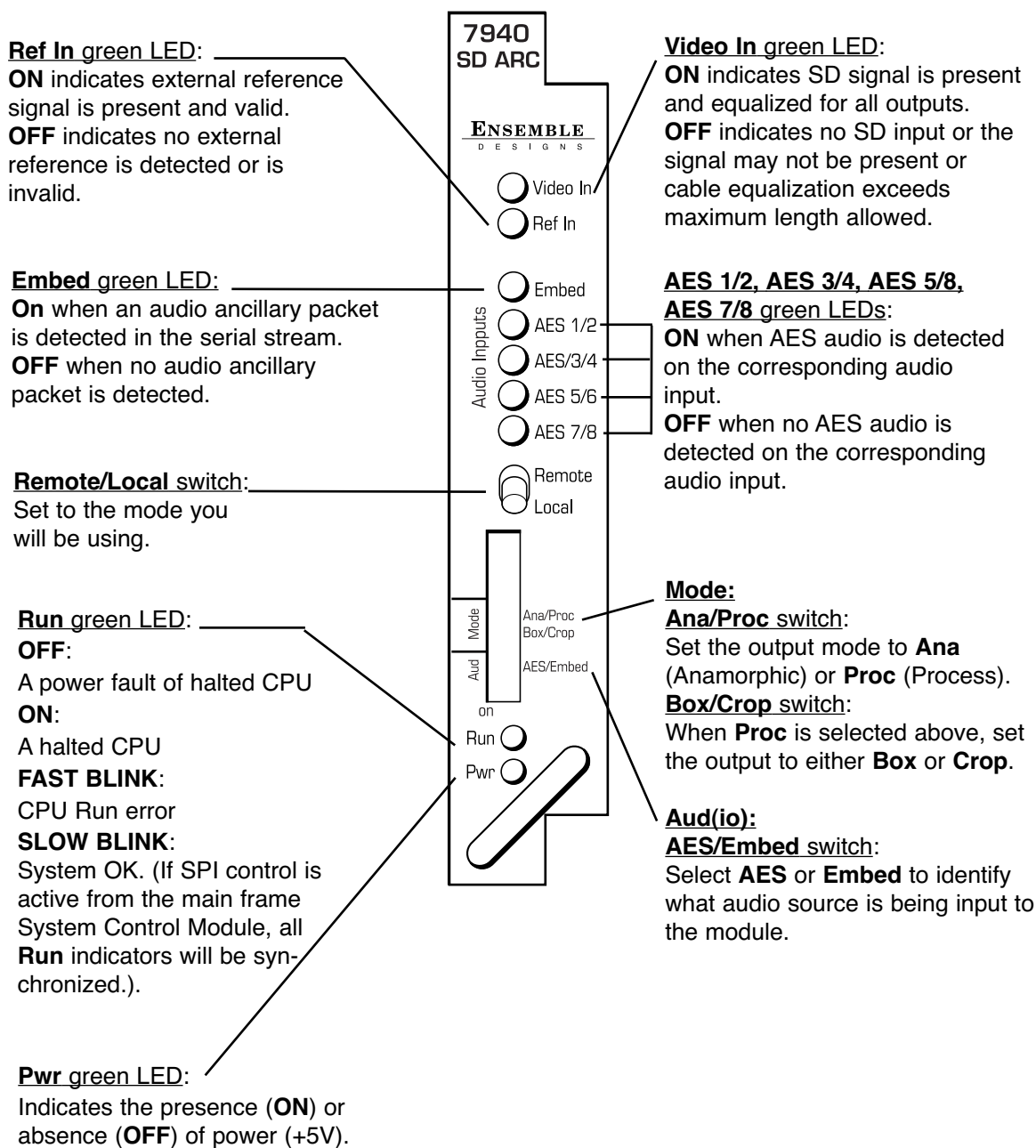
CONTROL	LOCAL	REMOTE	FACTORY DEFAULT	DEFAULT USER LEVEL
Ch 1-8 In (level)	0 dB	-70 to +12 dB	0 dB	Level 1
Ch 1-8 Output Bus	Ch 1 – Output 1 Ch 2 – Output 2 Ch 3 – Output 3 Ch 4 – Output 4 Ch 5 – Output 5 Ch 6 – Output 6 Ch 7 – Output 7 Ch 8 – Output 8	Output Bus 1 – 8 Tie Invert Default	Ch 1 – Output 1 Ch 2 – Output 2 Ch 3 – Output 3 Ch 4 – Output 4 Ch 5 – Output 5 Ch 6 – Output 6 Ch 7 – Output 7 Ch 8 – Output 8	Level 1
Auto Track	On	Off On	On	Level 1
Bulk Delay	0 msec	0 – 1000 msec	0 msec	Level 1
1/2 Input 3/4 Input 5/6 Input 7/8 Input	Audio Switch 1: AES or Embed	AES 1/2 AES 3/4 AES 5/6 AES 7/8 SDI 1/2 SDI 3/4 SDI 5/6 SDI 7/8	AES 1/2 AES 3/4 AES 5/6 AES 7/8	Level 1
1/2, 3/4, 5/6, 7/8 DeMux Group	Group 1	Group 1 Group 2 Group 3 Group 4	Group 1	Level 1
1/2, 3/4, 5/6, 7/8 Mode	Auto	Audio Data Auto	Auto	Level 1
Audio Embed A and B	Replace All	Off Replace Cascade Replace All	Replace All	Level 1
Mux Group A and B	Group 1	Group 1 Group 2 Group 3 Group 4	Group 1	Level 1
Dig Ref Level	-20 dBFS	-20 dBFS -18 dBFS	-20 dBFS	Level 1

7940 Parameter Table (Continued)

CONTROL	LOCAL	REMOTE	FACTORY DEFAULT	DEFAULT USER LEVEL
Input Line	Line 21	Lines 19 – 23	Line 21	Admin
Captions Out	Off	Off On	Off	Level 1
Timecode Source	VITC	LTC VITC DVITC	VITC	Level 1
Timecode Output	VITC	Off LTC VITC DVITC	VITC	Level 1
Cpst Out Setup	On	Off On	On	Level 2
AFD Out	AFD Auto	AFD 0001 AFD 0010 AFD 0011 AFD 0100 AFD 0101 AFD 0110 AFD 0111 AFD 1000 AFD 1001 AFD 1010 AFD 1011 AFD 1100 AFD 1101 AFD 1110 AFD 1111	AFD Auto	Level 1

Front Panel Controls and Indicators

The front edge indicators and switch settings are shown in the diagram below:



Avenue PC Remote Configuration

The Avenue PC remote control menus for this module are illustrated and explained below. Refer to the **7940 Parameter Table** for a summary of available parameters that can be set remotely through the menus illustrated. The **Configuration Summary** gives tips and general background information on setting the parameters. For more information on using Avenue PC, refer to the Avenue PC Control Application Software data pack.

Parameter fields that are grayed out can indicate one of the following conditions:

- An option is not installed.
- The function is not active.
- The module is locked.
- The User Level set with Avenue PC is not accessible from the current User Level.

7940 Avenue PC Menus

The **Vid In** menu allows you to configure the following:

- **Ref Source** – use this control to set the reference input source.

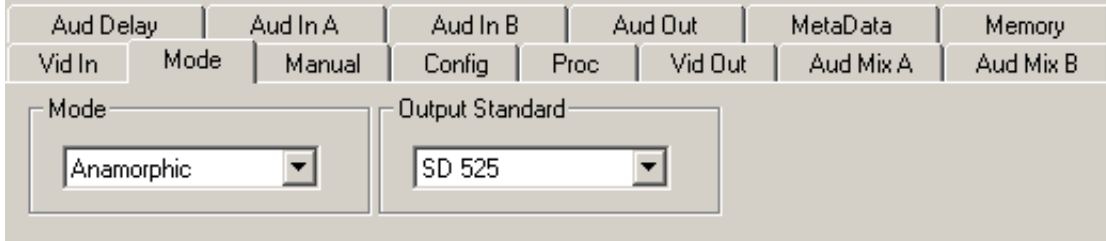
Status reporting is provided for the following conditions:

- **Input** – indicates signal is present and equalized.
- **WSS/AFD In** – the Wide Screen Signal/Active Format Descriptions In indicator displays the format of the input signal connected to the Video In BNC as one of the following: **None**, **Full Frame**, **Letter 14:9**, **Letter 14:9T**, **Letter 16:9**, **Letter 16:9T**, **Anamorphic**, **Pillar 4x3**, **Pillar 14x9**, **Unknown WSS**, **Unknown AFD**.
- **Reference** – reports the status of the reference input as either **No Reference**, **Ref 525 Lock**, or **Ref 625 Lock**.

Aud Delay	Aud In A	Aud In B	Aud Out	MetaData	Memory		
Vid In	Mode	Manual	Config	Proc	Vid Out	Aud Mix A	Aud Mix B
Input		WSS / AFD In					
No Input		None					
Ref Source		Reference					
Master Ref		Ref 525 Lock					

The **Mode** menu shown below allows you to configure the following:

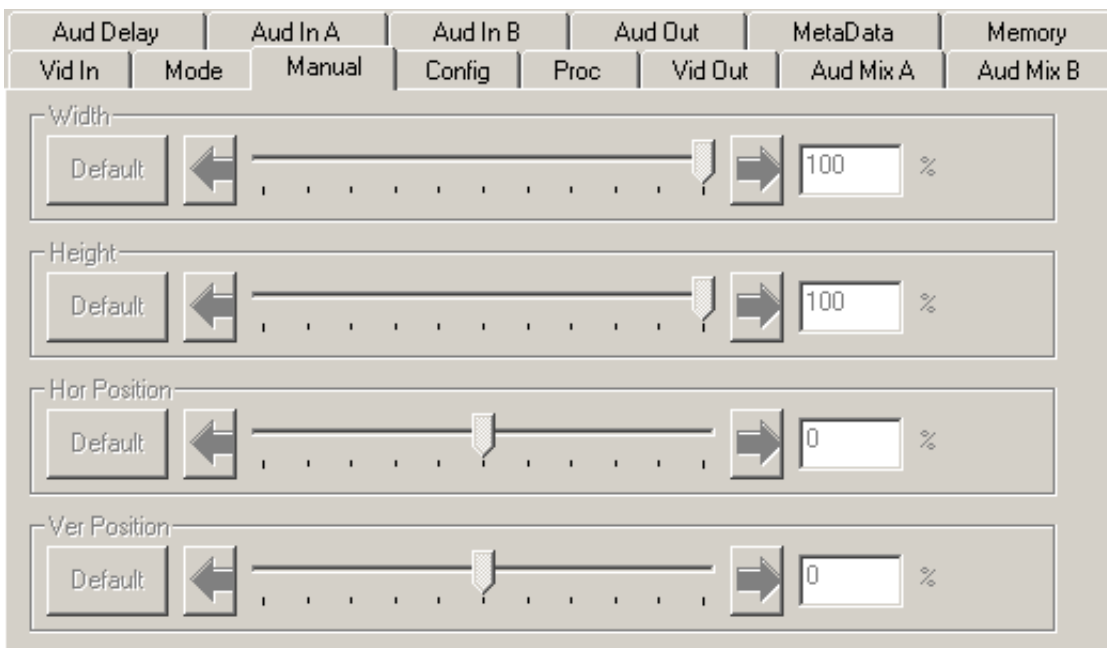
- **Mode** – use this control to set the aspect ratio mode for the SD video output. When **Manual** is selected, use the **Manual** menu given next.
- **Output Standard** – use this control to set the desired output standard to match the input signal.



When **Manual** is selected in the **Mode** menu above the **Manual** menu will be active and you may set the aspect ratio of the SD output as desired with the following controls:

- **Width** – set the aspect ratio width.
- **Height** – set the aspect ratio height.
- **Hor Position** – set the horizontal position of the output.
- **Ver Position** – set the vertical position of the output.

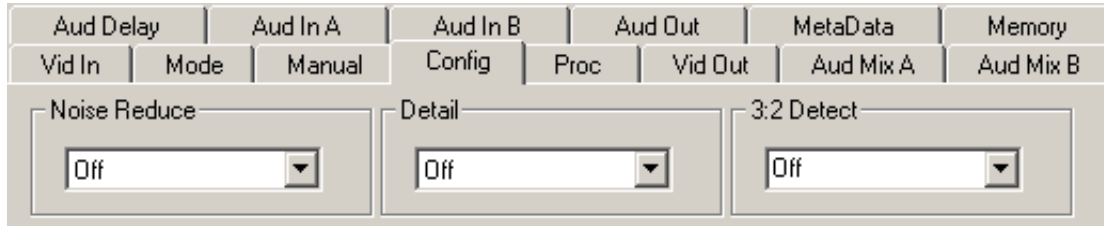
Use the **Default** button in each control to return to the default value.



Model 7940 SD Aspect Ratio Converter

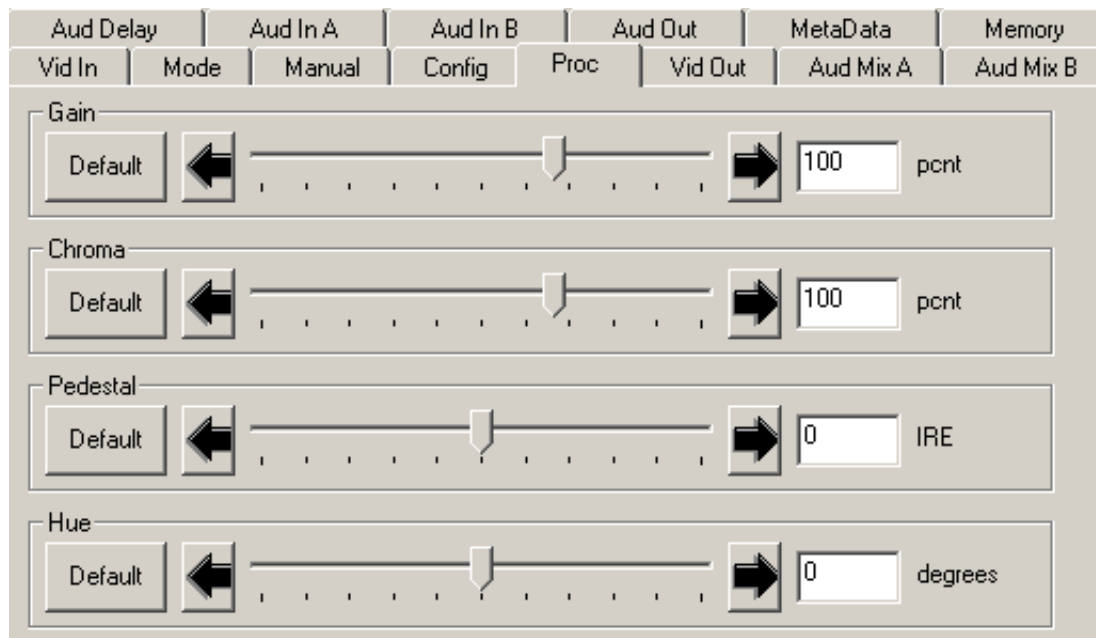
Use the **Config** menu below to enable the following controls:

- **Noise Reduce** – adjust the amount of noise reduction on the output signal from **Off**, **Low**, **Medium**, or **High**.
- **Detail** – adjust the amount of picture detail enhancement on the output from **Low**, **Medium**, or **High**.
- **3:2 Detect** – turn the control to detect video that has been converted from film, **On** or **Off**.



The **Proc** menu shown below allows you to adjust the following video processing parameters for the signal:

- **Gain** – adjust the percentage of overall gain (luminance and chrominance).
- **Chroma** – adjust the percentage of chroma amplitude.
- **Pedestal** – adjust the pedestal (black) level of the signal in IRE.
- **Hue** – adjust the hue of the signal ± 180 degrees.



Use the **Vid Out** menu shown below to adjust the following parameters:

- **Vert Blanking** – set the blanking mode to **Narrow** (lines 1-9 are blanked in NTSC, lines 1-6 in PAL) or **Wide** (lines 1-20 in NTSC, lines 1-22 in PAL).
- **Test Pattern** – select a test pattern to be sent to the video output of the module.
- **Hor Timing** – adjust the horizontal timing of the output signal to place the leading edge of sync coincident with other sources.
- **Vertical Timing** – set the vertical timing to a typical setting of 0 lines.
- **Cpst Out Setup** – turn setup on or off if a composite output has been configured on the SD Out 3 and/or SD Out 4 BNCs (525 only).

Aud Delay		Aud In A		Aud In B		Aud Out		MetaData		Memory	
Vid In	Mode	Manual	Config	Proc	Vid Out	Aud Mix A	Aud Mix B				

Vert Blanking

Wide ▾

Test Pattern

Off ▾

Hor Timing

Default ← [Slider] → 0 clocks

Vert Timing

Default ← [Slider] → 0 lines

Cpst Out Setup

Off ▾

When an 8415 Audio Processor submodule is installed, use the **Aud Mix A** and **B** menus shown next to control the audio mixing and shuffling of the module. Each output bus assignment will be indicated by a green box.

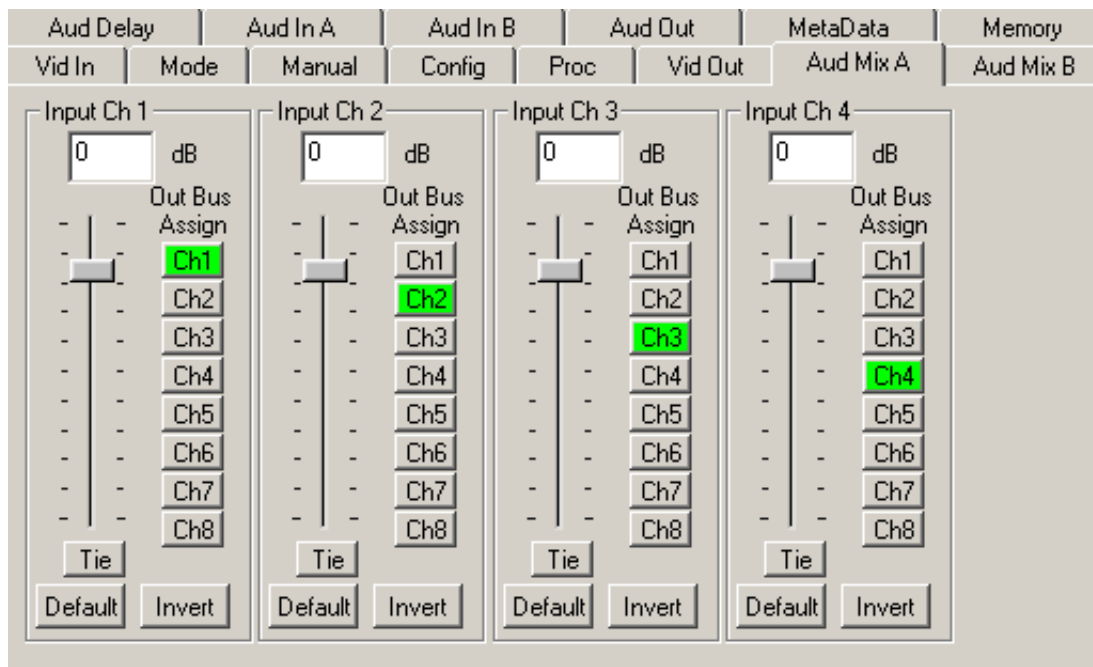
For Channels 1 – 4, use the **Audio Mix A** menu to set the following

- **Input Ch 1** – assign Input Channel 1 to the desired output bus or tie to Channel 2. Set the input level using the slider control or by entering a number in the window and pressing the **Enter** key on your PC.
- **Input Ch 2** – assign Input Channel 2 to the desired output bus or tie to Channel 1. Set the input level using the slider control or by entering a number in the window and pressing the **Enter** key on your PC.
- **Input Ch 3** – assign Input Channel 3 to the desired output bus or tie to Channel 4. Set the input level using the slider control or by entering a number in the window and pressing the **Enter** key on your PC.
- **Input Ch 4** – assign Input Channel 4 to the desired output bus or tie to Channel 3. Set the input level using the slider control or by entering a number in the window and pressing the **Enter** key on your PC.

Selecting the **Tie** button in Input Ch 1 or Input Ch 2 will tie the two controls together. Selecting the **Tie** button in Input Ch 3 or Input Ch 4 will tie the controls for these channels together.

Select the **Default** button to return to the default value.

Select the **Invert** button to invert the phase of the audio content.



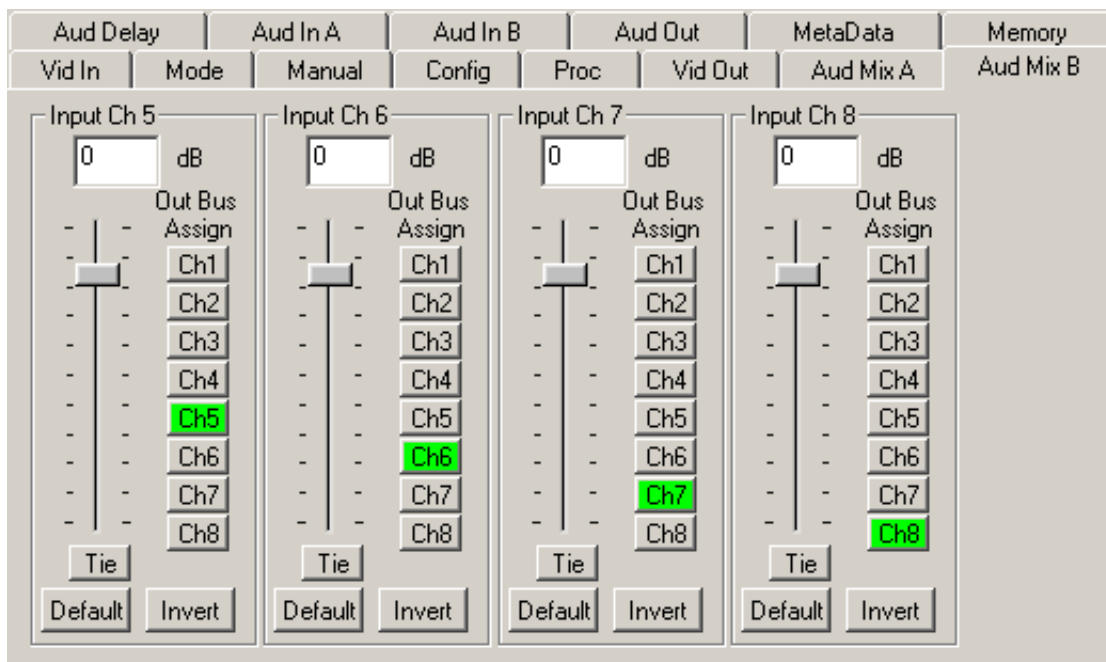
For Channels 5 – 8, use the **Audio Mix B** menu shown below to set the following

- **Input Ch 5** – assign Input Channel 5 to the desired output bus or tie to Channel 6. Set the input level using the slider control or by entering a number in the window and pressing the **Enter** key on your PC.
- **Input Ch 6** – assign Input Channel 6 to the desired output bus or tie to Channel 5. Set the input level using the slider control or by entering a number in the window and pressing the **Enter** key on your PC.
- **Input Ch 7** – assign Input Channel 7 to the desired output bus or tie to Channel 8. Set the input level using the slider control or by entering a number in the window and pressing the **Enter** key on your PC.
- **Input Ch 8** – assign Input Channel 8 to the desired output bus or tie to Channel 7. Set the input level using the slider control or by entering a number in the window and pressing the **Enter** key on your PC.

Selecting the **Tie** button in Input Ch 5 or Input Ch 6 will tie the two controls together. Selecting the **Tie** button in Input Ch 7 or Input Ch 8 will tie the controls for these channels together.

Select the **Default** button to return to the default value.

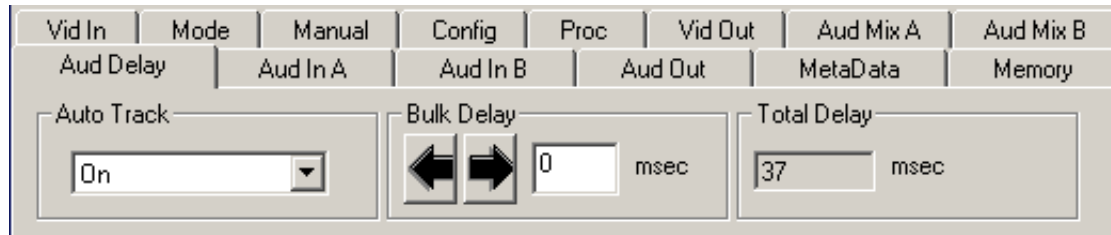
Select the **Invert** button to invert the phase of the audio content.



Use the **Aud Delay** menu shown below for the 8415 Audio submodule to adjust the amount of audio delay on the output:

- **Auto Track** – enable auto tracking by selecting **On** or **Off**.
- **Bulk Delay** – set the amount of bulk delay using the left and right arrows or enter a value in the **msec** field and press the **Enter** key on your PC.

The amount of total delay will be reported in nsec in the **Total Delay** window.



Use the **Aud In A** menu shown on the next page to adjust the following parameters:

- **1/2 Input** – select the input audio source for Input 1/2.
- **3/4 Input** – select the input audio source for Input 3/4.

When an AES input pair is selected as an input, the corresponding AES BNC on the rear of the module will become an input. If an AES input is not selected, the corresponding BNC on the rear of the module will automatically become an output. Refer to the block diagram on page 4 for an illustration of the input/output BNCs.

- **1/2 Mode** – for a Serial input with embedded audio, select the type of audio in the stream:
 - **Audio** – the embedded stream is standard audio.
 - **Data** – the embedded stream is a non-audio signal.
 - **Auto** – the module will detect the type of signal embedded in the stream, audio or data.
- **3/4 Mode** – select the type of audio in the serial stream as described above.
- **DeMux Group** – select the embedded audio group to demultiplex from the selections. The status of embedded audio is shown in the **Embed In** view.

The status of the corresponding audio inputs are shown next to the control. Status is reported as one of the following:

- **No Input** – no serial digital embedded audio is detected.
- **Audio Sync** – the audio embedded in the stream is synchronous with the timing reference.
- **Data Sync** – the data embedded in the stream is synchronous with the timing reference.
- **Audio Async** – the audio embedded in the stream is non-synchronous with the timing reference.

Vid In	Mode	Manual	Config	Proc	Vid Out	Aud Mix A	Aud Mix B
Aud Delay	Aud In A		Aud In B	Aud Out	MetaData	Memory	
1/2 Input SDI 1/2			1/2 Status No Input		1/2 Mode Audio		
3/4 Input AES 3/4			3/4 Status No Input		3/4 Mode Audio		
DeMux Group Group 1			Embed In A None				

Use the **Aud In B** menu shown on the next page to adjust the following parameters:

- **5/6 Input** – select the input audio source for Input 5/6.
- **7/8 Input** – select the input audio source for Input 7/8.

When an AES input pair is selected as an input, the corresponding AES BNC on the rear of the module will become an input. If an AES input is not selected, the corresponding BNC on the rear of the module will automatically become an output. Refer to the block diagram on page 4 for an illustration of the input/output BNCs.

- **5/6 Mode** – for a Serial input with embedded audio, select the type of audio in the stream:
 - **Audio** – the embedded stream is standard audio.
 - **Data** – the embedded stream is a non-audio signal.
 - **Auto** – the module will detect the type of signal embedded in the stream, audio or data.
- **7/8 Mode** – select the type of audio in the serial stream as described above.
- **DeMux Group** – select the embedded audio group to demultiplex from the selections. The status of embedded audio is shown in the **Embed In** view.

The status of the corresponding audio inputs are shown next to the control. Status is reported as one of the following:

- **No Input** – no serial digital embedded audio is detected.
- **Audio Sync** – the audio embedded in the stream is synchronous with the timing reference.
- **Data Sync** – the data embedded in the stream is synchronous with the timing reference.
- **Audio Async** – the audio embedded in the stream is non-synchronous with the timing reference.

Vid In	Mode	Manual	Config	Proc	Vid Out	Aud Mix A	Aud Mix B
Aud Delay		Aud In A	Aud In B	Aud Out		MetaData	Memory
5/6 Input		5/6 Status		5/6 Mode			
AES 5/6		No Input		Audio			
7/8 Input		7/8 Status		7/8 Mode			
AES 7/8		No Input		Audio			
DeMux Group		Embed In B					
Group 2		None					

Use the **Aud Out** menu shown below to adjust the following audio output parameters:

- **Audio Embed A** – turn embedding **Off** for no embedding to take place in the output signal. Select **Replace** to replace the targeted group in the stream with new content. If there is no such group already present, the new content will be placed in the horizontal interval in normal cascade, following any other content already there. When **Cascade** is selected, the audio channels are placed after any existing content. **Replace All** will strip all of the original content and the new content is placed at the beginning of the horizontal interval.
- **Audio Embed B** – identical to **Audio Embed A** but no **Replace All** function is required as this will occur upstream in the A embedder.
- **Mux Group A** – select the multiplexed group to be embedded in embedder A in the output.
- **Mux Group B** – select the multiplexed group to be embedded in embedder B in the output.
- **Dig Ref Level** – set the digital reference level for the audio output.

Vid In	Mode	Manual	Config	Proc	Vid Out	Aud Mix A	Aud Mix B
Aud Delay		Aud In A	Aud In B	Aud Out		MetaData	Memory
Audio Embed A		Mux Group A					
Replace All		Group 1					
Audio Embed B		Mux Group B					
Cascade		Group 2					
Dig Ref Level							
-20dBFS							

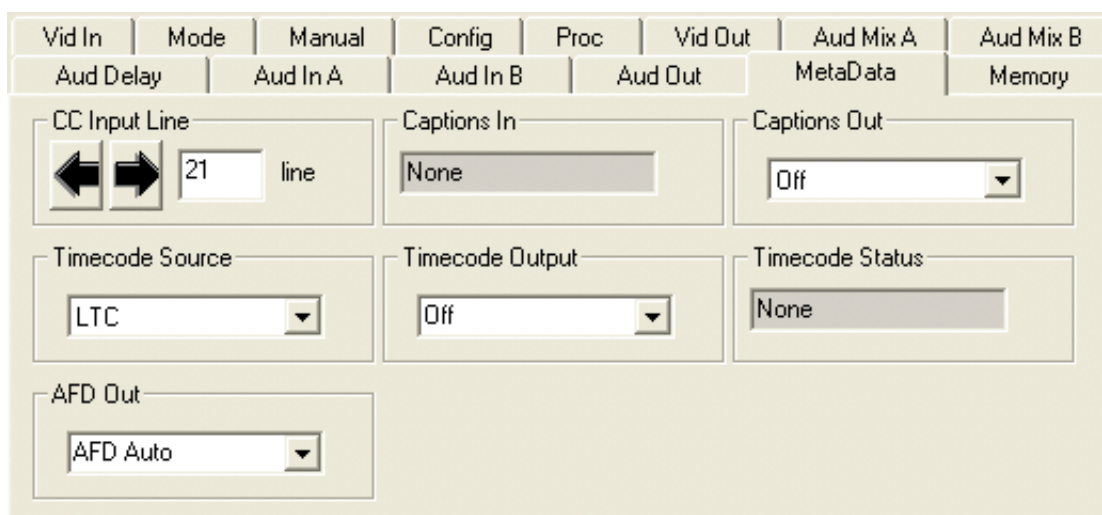
The **MetaData** menu reports or provides settings for the following closed captioning and timecode parameters:

- **CC Input Line** – You do not need to set the value for this control. If an SD signal is present on the input, the module will autosense which line the caption data is on and report that information in the Captions In box.
- **Captions In** – Reports the status of caption data on the input signal as **None**, **Line 21**, **Line 23**, **CEA608** or **CEA708**.
- **Captions Out** – If the **Captions In** display reports the presence of closed captioning, set to **On** for passing the captions through to the output or turn **Off** closed captioning on the output.
- **Timecode Source** – set the type of timecode source present in the input signal, **LTC**, **VITC Line 14** through **VITC Line 20**.
- **Timecode Output** – set the type of timecode for insertion on the output signal.
- **Timecode Status** display will report **None**, **Line 21**, **Line 23**, **CEA608** or **CEA708**.
- **AFD Out** – set the AFD (Active Format Description) output code for the desired aspect ratio. AFD is a four-bit code that defines the active image area and protected image areas for various combinations of aspect ratios. Available values for this field are:

AFD Auto (default value)

The following additional values represent binary codes:

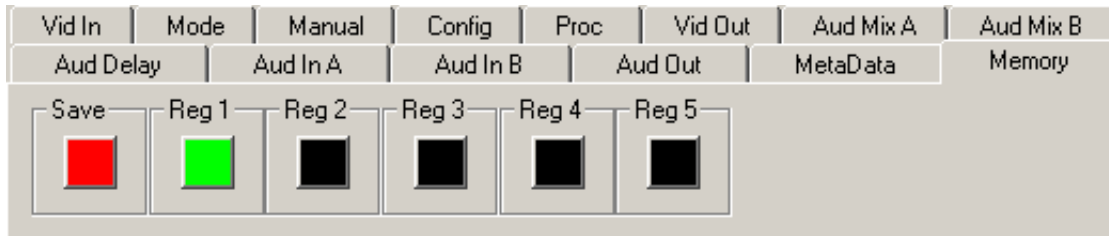
AFD 0001	AFD 0110	AFD 1011
AFD 0010	AFD 0111	AFD 1100
AFD 0011	AFD 1000	AFD 1101
AFD 0100	AFD 1001	AFD 1110
AFD 0101	AFD 1010	AFD 1111



Model 7940 SD Aspect Ratio Converter

The **Memory** menu shown below allows you to save overall module setups to five memory registers as follows:

- Select **Save**, then one of the five memory registers **Reg 1 – 5**. The box will turn green. The entire module setup is now saved in the selected register.
- To recall a register, select the register box. If there is information saved, the box will turn green. The saved setup will now be loaded to the module. Up to five different module setups can be saved and recalled using the individual registers.



Avenue Touch Screen Remote Configuration

The Avenue Touch Screen remote control menus for this module are illustrated and explained below. Refer to the **7940 Parameter Table** for a summary of available parameters that can be set remotely through the menus illustrated. The **Configuration Summary** gives tips and general background information on setting the parameters. For more information on using Avenue PC, refer to the Avenue PC Control Application Software data pack.

Parameter fields that are grayed out can indicate one of the following conditions:

- An option is not installed.
- The function is not active.
- The module is locked.
- The User Level set with Avenue PC is not accessible from the current User Level.

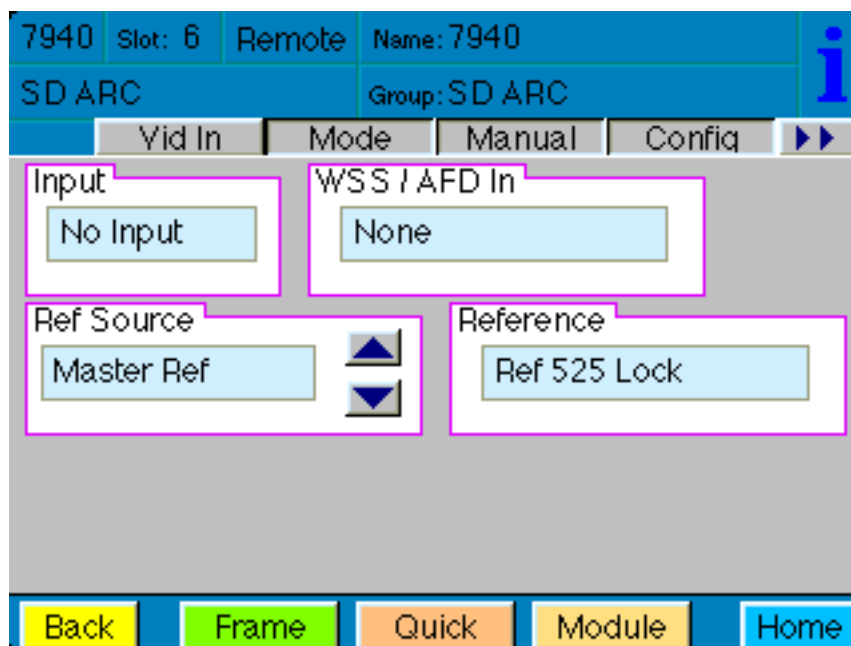
7940 Avenue Touch Screen Menus

The **Vid In** menu allows you to configure the following:

- **Ref Source** – use this control to set the reference input source.

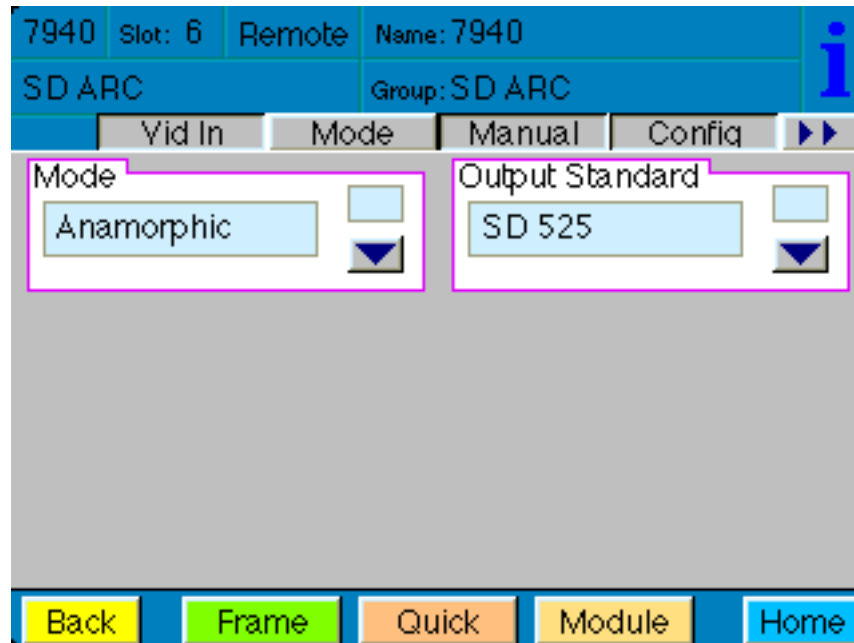
Status reporting is provided for the following conditions:

- **Input** – indicates signal is present and equalized.
- **WSS/AFD In** – the Wide Screen Signal/Active Format Descriptions In indicator displays the format of the input signal connected to the Video In BNC as one of the following: **None**, **Full Frame**, **Letter 14:9**, **Letter 14:9T**, **Letter 16:9**, **Letter 16:9T**, **Anamorphic**, **Pillar 4x3**, **Pillar 14x9**, **Unknown WSS**, **Unknown AFD**.
- **Reference** – reports the status of the reference input as either **No Reference**, **Ref 525 Lock**, or **Ref 625 Lock**.



The **Mode** menu shown below allows you to configure the following:

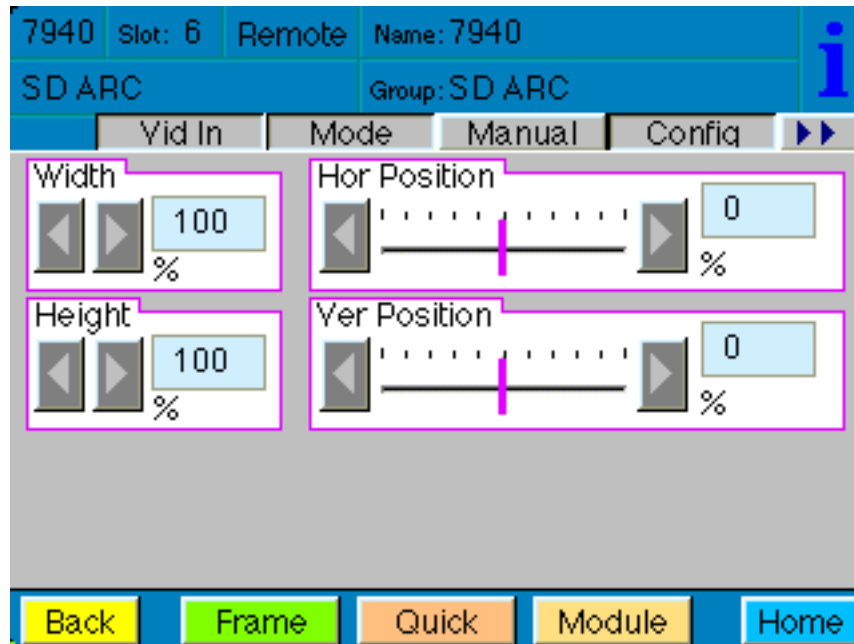
- **Mode** – use this control to set the aspect ratio mode for the SD video output. When **Manual** is selected, use the **Manual** menu given next.
- **Output Standard** – use this control to set the desired output standard for down-conversion.



When **Manual** is selected in the previous **Mode** menu, the **Manual** menu becomes active and you may set the aspect ratio output of the SD output as desired with the following controls:

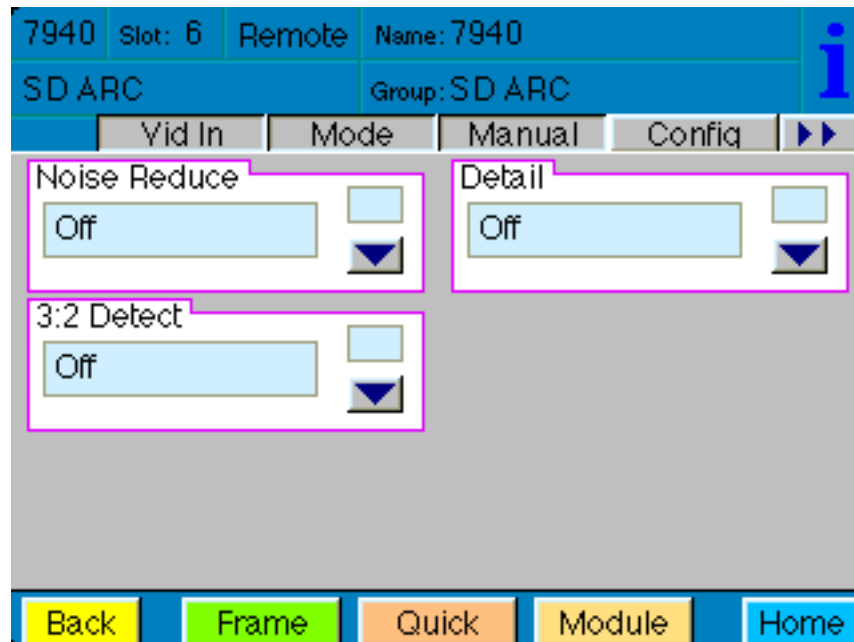
- **Width** – set the width of the output .
- **Height** – set the height of the output .
- **Hor Position** – set the horizontal position of the output.
- **Ver Position** – set the vertical position of the output.

Use the **Default** button in each control to return to the default value.



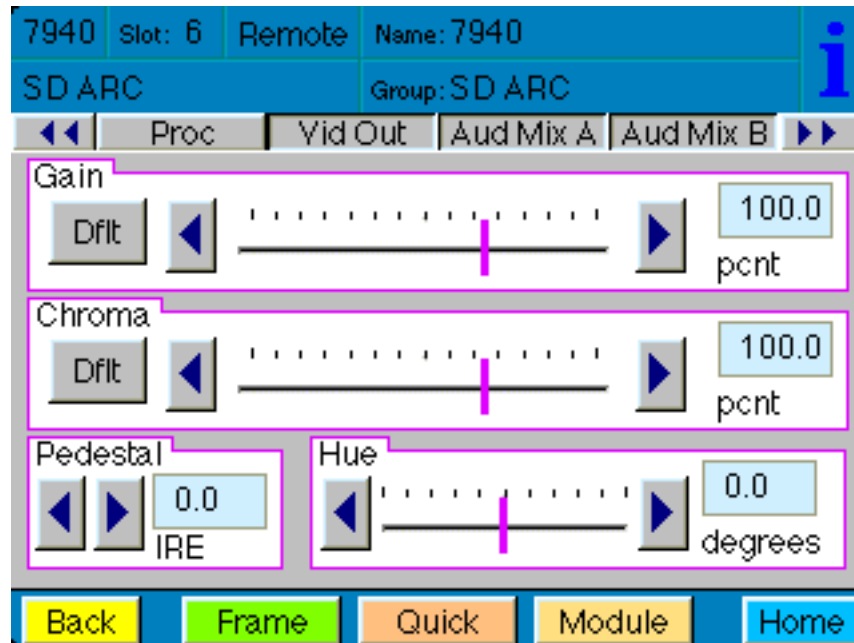
Use the **Config** menu below to enable the following controls:

- **Noise Reduce** – adjust the amount of noise reduction on the output signal from **Off**, **Low**, **Medium**, or **High**.
- **Detail** – adjust the amount of picture detail enhancement on the output from **Low**, **Medium**, or **High** .
- **3:2 Detect** – turn the control to detect video that has been converted from film, **On** or **Off**.



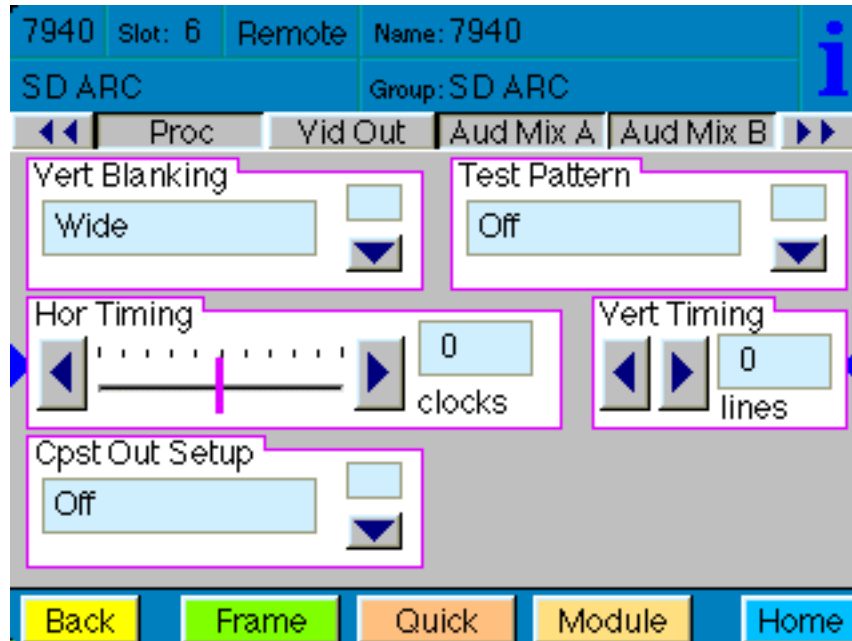
The **Proc** menu shown below allows you to adjust the following video processing parameters for the signal:

- **Gain** – adjust the percentage of overall gain (luminance and chrominance).
- **Chroma** – adjust the percentage of chroma amplitude.
- **Pedestal** – adjust the pedestal (black) level of the signal in IRE.
- **Hue** – adjust the hue of the signal ± 180 degrees.



Use the **Vid Out** menu shown below to adjust the following parameters:

- **Vert Blanking** – set the blanking mode to **Narrow** (lines 1-9 are blanked in NTSC, lines 1-6 in PAL) or **Wide** (lines 1-20 in NTSC, lines 1-22 in PAL).
- **Test Pattern** – select a test pattern to be sent to the video output of the module.
- **Hor Timing** – adjust the horizontal timing of the output signal to place the leading edge of sync coincident with other sources.
- **Vertical Timing** – set the vertical timing to a typical setting of 0 lines.
- **Cpst Out Setup** – turn setup on or off if a composite output has been configured on the SD Out 3 and/or SD Out 4 BNCs (525 only).



When an 8415 Audio Processor submodule is installed, use the **Aud Mix A** and **B** menus shown next to control the audio mixing and shuffling of the module. Each output bus assignment will be indicated by a green box.

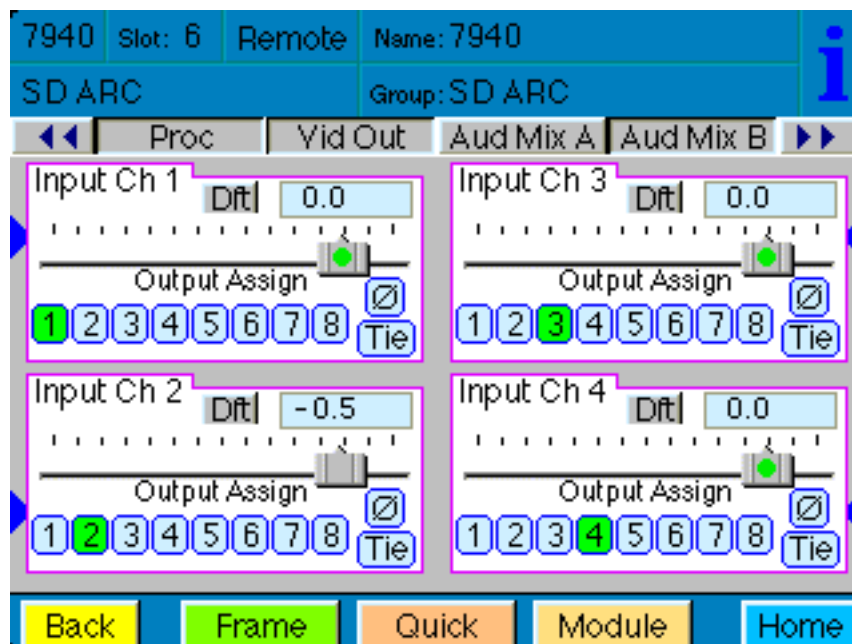
For Channels 1 – 4, use the **Audio Mix A** menu to set the following

- **Input Ch 1** – assign Input Channel 1 to the desired output bus or tie to Channel 2. Set the input level using the slider control or by entering a number in the pop-up keypad and pressing the **Enter** key.
- **Input Ch 2** – assign Input Channel 2 to the desired output bus or tie to Channel 1. Set the input level using the slider control or by entering a number in the pop-up keypad and pressing the **Enter** key.
- **Input Ch 3** – assign Input Channel 3 to the desired output bus or tie to Channel 4. Set the input level using the slider control or by entering a number in the pop-up keypad and pressing the **Enter** key.
- **Input Ch 4** – assign Input Channel 4 to the desired output bus or tie to Channel 3. Set the input level using the slider control or by entering a number in the pop-up keypad and pressing the **Enter** key.

Selecting the **Tie** button in Input Ch 1 or Input Ch 2 will tie the two controls together. Selecting the **Tie** button in Input Ch 3 or Input Ch 4 will tie the controls for these channels together.

Select the **Default** button to return to the default value.

Select the **Invert** button to invert the phase of the audio content.



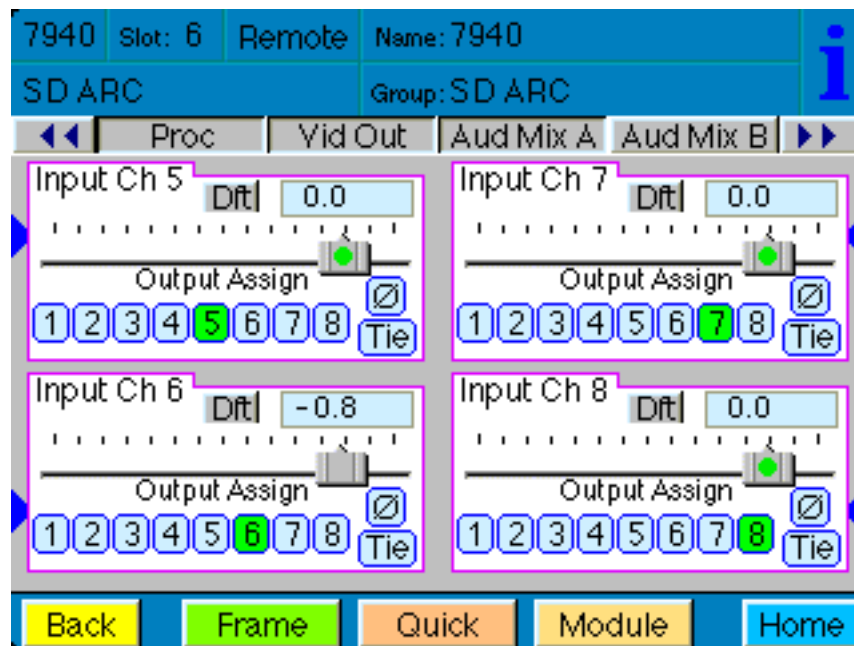
For Channels 5 – 8, use the **Audio Mix B** menu shown below to set the following

- **Input Ch 5** – assign Input Channel 5 to the desired output bus or tie to Channel 6. Set the input level using the slider control or by entering a number in the pop-up keypad and pressing the **Enter** key.
- **Input Ch 6** – assign Input Channel 6 to the desired output bus or tie to Channel 5. Set the input level using the slider control or by entering a number in the pop-up keypad and pressing the **Enter** key.
- **Input Ch 7** – assign Input Channel 7 to the desired output bus or tie to Channel 8. Set the input level using the slider control or by entering a number in the pop-up keypad and pressing the **Enter** key.
- **Input Ch 8** – assign Input Channel 8 to the desired output bus or tie to Channel 7. Set the input level using the slider control or by entering a number in the pop-up keypad and pressing the **Enter** key.

Selecting the **Tie** button in Input Ch 5 or Input Ch 6 will tie the two controls together. Selecting the **Tie** button in Input Ch 7 or Input Ch 8 will tie the controls for these channels together.

Select the **Default** button to return to the default value.

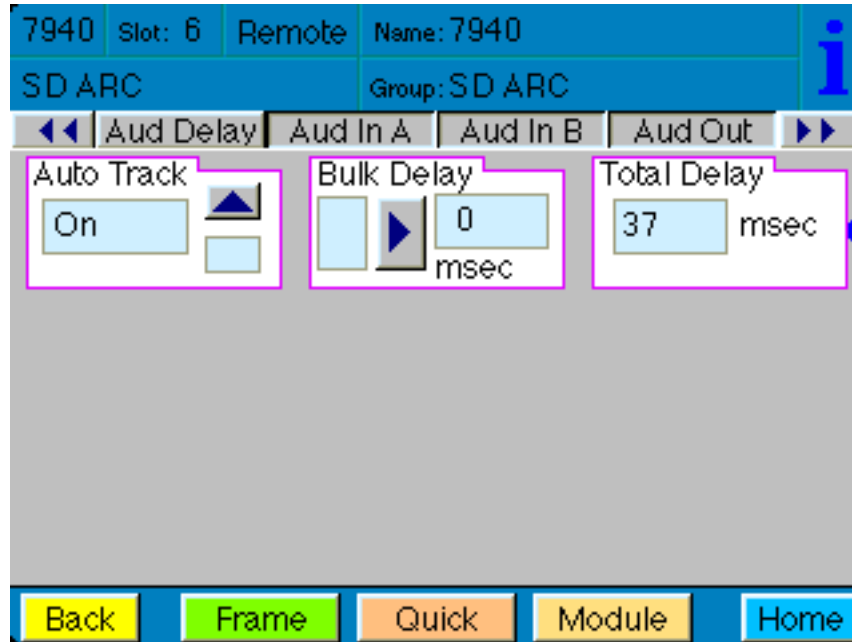
Select the **Invert** button to invert the phase of the audio content.



Use the **Aud Delay** menu shown below for the 8415 Audio submodule to adjust the amount of audio delay on the output:

- **Auto Track** – enable auto tracking by selecting **On** or **Off**.
- **Bulk Delay** – set the amount of bulk delay using the left and right arrows or enter a value in the **msec** field with the pop-up keypad and press the **Enter** key.

The amount of total delay will be reported in nsec in the **Total Delay** window.



Use the **Aud In A** menu shown on the next page to adjust the following parameters:

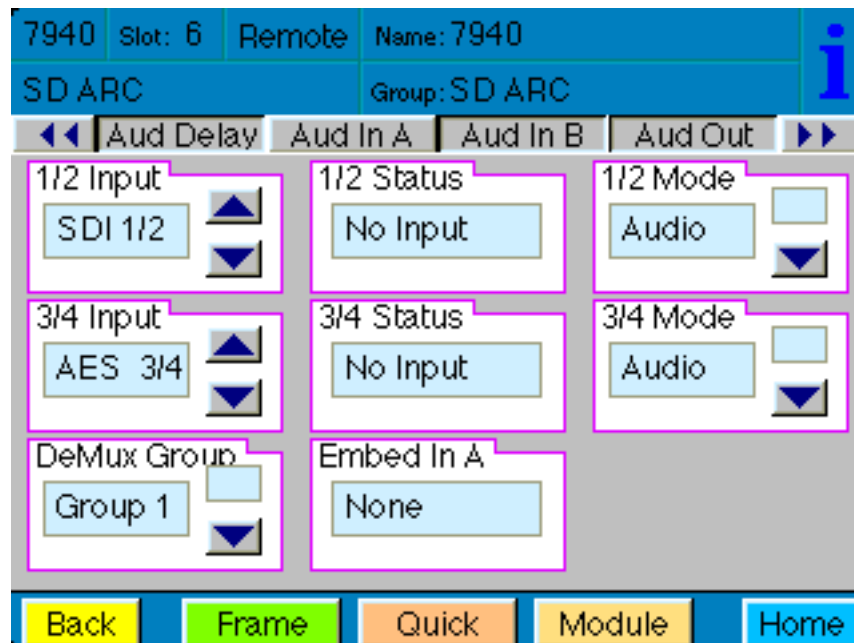
- **1/2 Input** – select the input audio source for Input 1/2.
- **3/4 Input** – select the input audio source for Input 3/4.

When an AES input pair is selected as an input, the corresponding AES BNC on the rear of the module will become an input. If an AES input is not selected, the corresponding BNC on the rear of the module will automatically become an output. Refer to the block diagram on page 4 for an illustration of the input/output BNCs.

- **1/2 Mode** – for a Serial input with embedded audio, select the type of audio in the stream:
 - **Audio** – the embedded stream is standard audio.
 - **Data** – the embedded stream is a non-audio signal.
 - **Auto** – the module will detect the type of signal embedded in the stream, audio or data.
- **3/4 Mode** – select the type of audio in the serial stream as described above.
- **DeMux Group** – select the embedded audio group to demultiplex from the selections. The status of embedded audio is shown in the **Embed In** view.

The status of the corresponding audio inputs are shown next to the control. Status is reported as one of the following:

- **No Input** – no serial digital embedded audio is detected.
- **Audio Sync** – the audio embedded in the stream is synchronous with the timing reference.
- **Data Sync** – the data embedded in the stream is synchronous with the timing reference.
- **Audio Async** – the audio embedded in the stream is non-synchronous with the timing reference.



Use the **Aud In B** menu shown on the next page to adjust the following parameters:

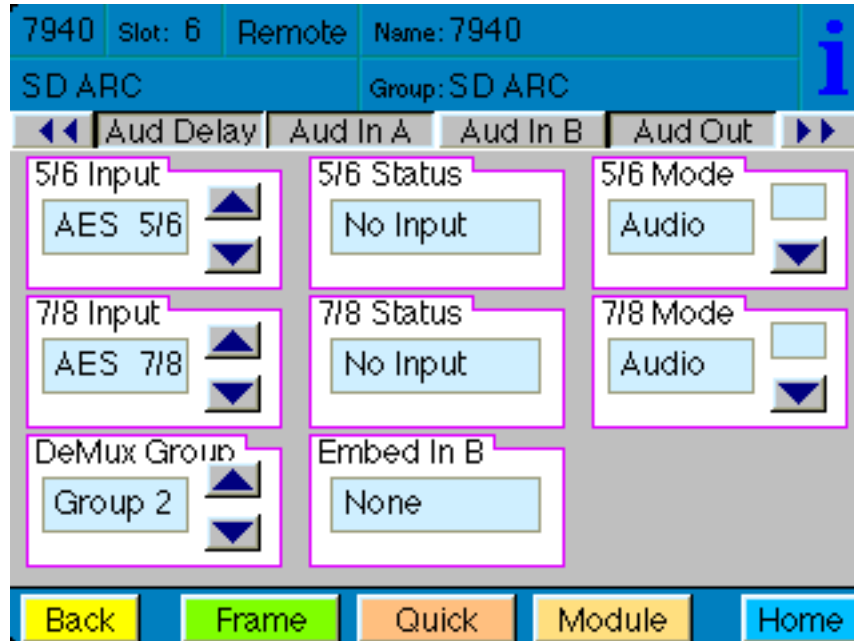
- **5/6 Input** – select the input audio source for Input 5/6.
- **7/8 Input** – select the input audio source for Input 7/8.

When an AES input pair is selected as an input, the corresponding AES BNC on the rear of the module will become an input. If an AES input is not selected, the corresponding BNC on the rear of the module will automatically become an output. Refer to the block diagram on page 4 for an illustration of the input/output BNCs.

- **5/6 Mode** – for a Serial input with embedded audio, select the type of audio in the stream:
 - **Audio** – the embedded stream is standard audio.
 - **Data** – the embedded stream is a non-audio signal.
 - **Auto** – the module will detect the type of signal embedded in the stream, audio or data.
- **7/8 Mode** – select the type of audio in the serial stream as described above.
- **DeMux Group** – select the embedded audio group to demultiplex from the selections. The status of embedded audio is shown in the **Embed In** view.

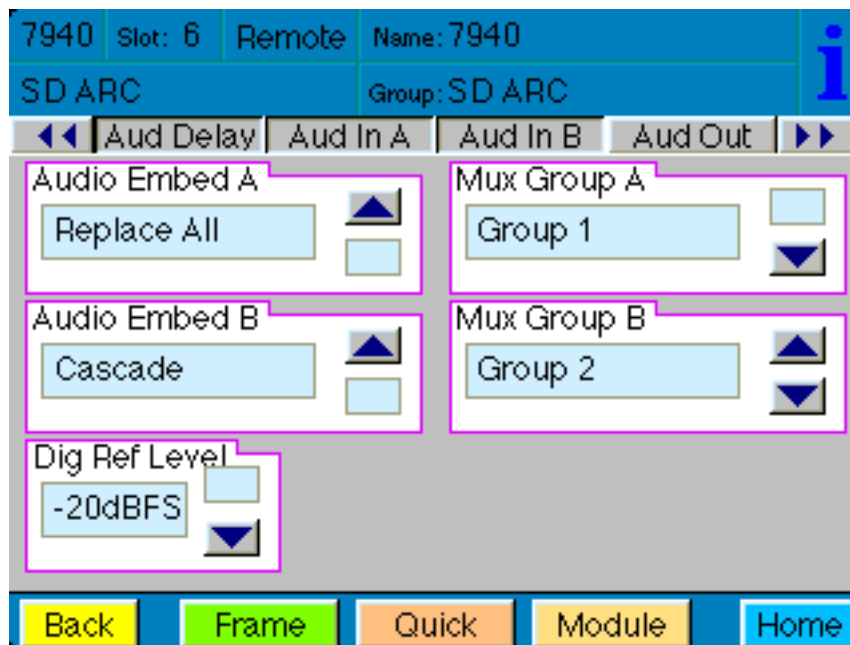
The status of the corresponding audio inputs are shown next to the control. Status is reported as one of the following:

- **No Input** – no serial digital embedded audio is detected.
- **Audio Sync** – the audio embedded in the stream is synchronous with the timing reference.
- **Data Sync** – the data embedded in the stream is synchronous with the timing reference.
- **Audio Async** – the audio embedded in the stream is non-synchronous with the timing reference.



Use the **Aud Out** menu shown below to adjust the following audio output parameters:

- **Audio Embed A** – turn embedding **Off** for no embedding to take place in the output signal. Select **Replace** to replace the targeted group in the stream with new content. If there is no such group already present, the new content will be placed in the horizontal interval in normal cascade, following any other content already there. When **Cascade** is selected, the audio channels are placed after any existing content. **Replace All** will strip all of the original content and the new content is placed at the beginning of the horizontal interval.
- **Audio Embed B** – identical to **Audio Embed A** but no **Replace All** function is required as this will occur upstream in the A embedder.
- **Mux Group A** – select the multiplexed group to be embedded in embedder A in the output.
- **Mux Group B** – select the multiplexed group to be embedded in embedder B in the output.
- **Dig Ref Level** – set the digital reference level for the audio output.



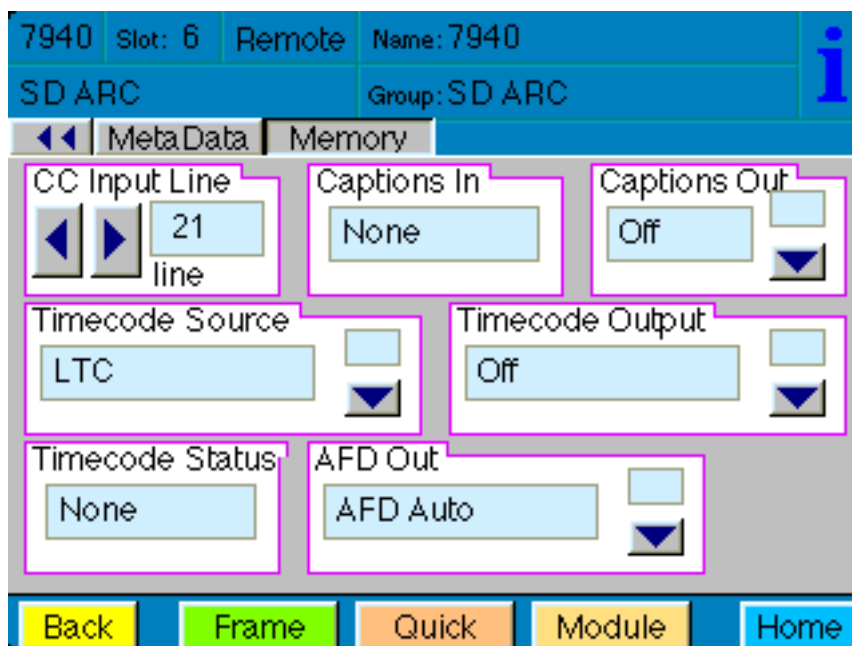
The **MetaData** menu reports or provides settings for the following closed captioning and timecode parameters:

- **CC Input Line** – You do not need to set the value for this control. If an SD signal is present on the input, the module will autosense which line the caption data is on and report that information in the Captions In box.
- **Captions In** – Reports the status of caption data on the input signal as **None**, **Line 21**, **Line 23**, **CEA608** or **CEA708**.
- **Captions Out** – If the **Captions In** display reports the presence of closed captioning, set to **On** for passing the captions through to the output or turn **Off** closed captioning on the output.
- **Timecode Source** – set the type of timecode source present in the input signal, **LTC**, **VITC Line 14** through **VITC Line 20**.
- **Timecode Output** – set the type of timecode for insertion on the output signal.
- **Timecode Status** display will report **None**, **Line 21**, **Line 23**, **CEA608** or **CEA708**.
- **AFD Out** – set the AFD (Active Format Description) output code for the desired aspect ratio. AFD is a four-bit code that defines the active image area and protected image areas for various combinations of aspect ratios. Available values for this field are:

AFD Auto (default value)

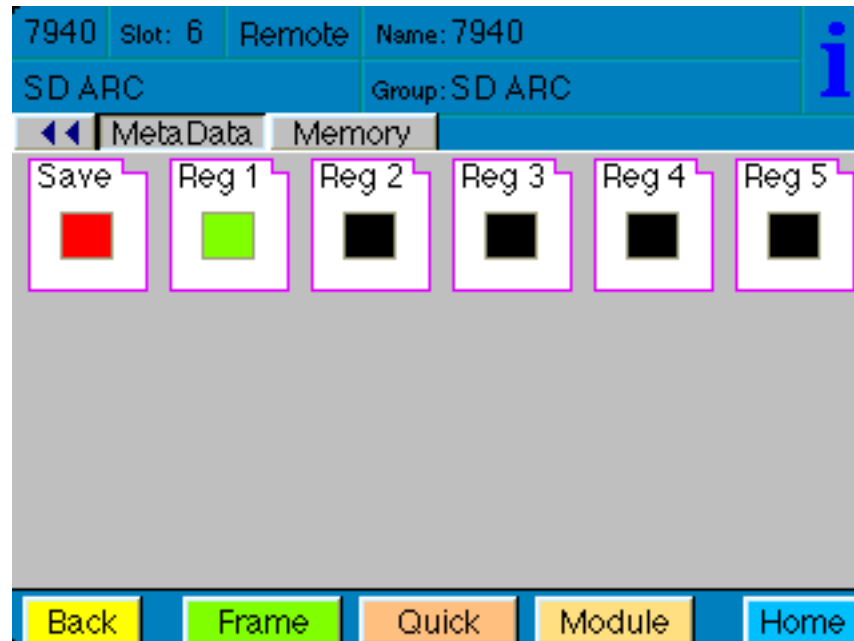
The following additional values represent binary codes:

AFD 0001	AFD 0110	AFD 1011
AFD 0010	AFD 0111	AFD 1100
AFD 0011	AFD 1000	AFD 1101
AFD 0100	AFD 1001	AFD 1110
AFD 0101	AFD 1010	AFD 1111



The **Memory** menu shown below allows you to save overall module setups to five memory registers as follows:

- Select **Save**, then one of the five memory registers **Reg 1 – 5**. The box will turn green. The entire module setup is now saved in the selected register.
- To recall a register, select the register box. If there is information saved, the box will turn green. The saved setup will now be loaded to the module. Up to five different module setups can be saved and recalled using the individual registers.



TROUBLESHOOTING

As a troubleshooting aid, the signal presence, power and CPU status can be easily monitored from the front panel of this module using the indicators explained in the **Front Panel Switches and Indicators** section.

The following status items can be monitored using the Avenue Touch Screen Control Panel, Express Panel, or PC Application:

- Input Status
- Slot ID, Software Version and Board Revision

Refer to the overall troubleshooting tips given below for the module:

No status lights are lit on front panel:

- Check that frame power is present (green LED{s} on frame power supplies).
- Check that module is firmly seated in frame. Try removing it and plugging it in again.

Can't control module:

- Check status of CPU **Run** green LED. Should be blinking slowly and in unison with other modules if System module is present. If not, try removing it and plugging it in again.
- System module may not be working properly if installed.

No video or audio signal out of module:

- Check status of **In** green LEDs. If not lit, check the input signal for presence and quality.
- Check cabling to input of module.

You may also refer to the technical support section of the Ensemble Designs web site for the latest information on your equipment at the URL below:

<http://www.ensembledesigns.com/support>

SOFTWARE UPDATING

Software upgrades for each module can be downloaded remotely if the optional System Control module is installed. These can be downloaded onto your PC and then Avenue PC will distribute the update to the individual module. (Refer to the Avenue PC documentation for more information.) Periodically updates will be posted on our web site. If you do not have the required System Control Module and Avenue PC, modules can be sent back to the factory for software upgrades.

WARRANTY AND FACTORY SERVICE

Warranty

This Module is covered by a five year limited warranty, as stated in the main Preface of this manual. If you require service (under warranty or not), please contact Ensemble Designs and ask for customer service before you return the unit. This will allow the service technician to provide any other suggestions for identifying the problem and recommend possible solutions.

Factory Service

If you return equipment for repair, please get a Return Material Authorization Number (RMA) from the factory first.

Ship the product and a written description of the problem to:

Ensemble Designs, Inc.

Attention: Customer Service RMA #####

870 Gold Flat Rd.

Nevada City, CA. 95959 USA

(530) 478-1830

Fax: (530) 478-1832

service@ensembledesigns.com

<http://www.ensembledesigns.com>

Be sure to put your RMA number on the outside of the box.

SPECIFICATIONS

7940 SD Aspect Ratio Converter

Serial Digital Input

Number: One
 Signal Type: SD Serial Digital 270 Mb/s
 SMPTE 259M-C (both 525 and 625 standards)
 Impedance: 75 Ω , BNC
 Return Loss: >15 dB
 Maximum Cable Length:
 270 Mb/s 300 meters (Belden 1694A or equivalent)

Serial Digital Outputs

Number: Four Maximum
 Type: SD Serial Digital 270 Mb/s
 SMPTE 259M-C
 Impedance: 75 Ω , BNC
 Return Loss: >15 dB
 Output DC: None (AC coupled)

Reference Input

Number: One external (module's BNC)
 One internal (frame master ref BNC)
 Signal Type: PAL or NTSC composite video
 Return Loss: >40 dB (applies to external ref input)

AES/EBU Digital Inputs (with 8415 submodule option)

Number: Four (total of eight channels)
 Type: AES3id
 Connectorization: Coaxial, 75 Ω BNC
 Bit Depth: 20 or 24 Bit
 Sample Rate: 30KHz to 100KHz
 (sample rate converted internally to 48KHz)
 Crosstalk: < 144 dB
 Dynamic Range: > 144 dB
 Reference Level: -18 or -20 dBFS (Selectable)
 AC-3, Dolby-E: Supported when inputs are synchronous

Embedded Inputs

Number: Four AES Streams (from video input)
Eight channels from any two of four groups
Selectable to any of four groups

Type: SMPTE 274M Compliant
Selectable to any of four groups

Channels: Eight

Bit Depth: 20 or 24 Bit

AES/EBU Digital Outputs

Number: Four (total of eight channels)

Type: AES3id

Connectorization: Coaxial, 75 Ω BNC

Bit Depth: 20 or 24 Bit

Sample Rate: 48 KHz
Synchronous to Video output

Reference Level: -18 or -20 dBFS (Selectable)

Embedded Output

Number: Four or two, depending on configuration

Group Assign: Cascade, or Replace any of two of four groups

Channels: Eight

Bit Depth: 24 Bit

Analog Output (available when output is configured as composite)

Number: Two Maximum
(BNCs shared with SD-SDI outputs)

Type: NTSC or PAL Composite
Standard matches SDI output

Impedance: 75 Ω BNC

Return Loss: > 40 dB

Sample Rate: 30KHz to 100KHz

Output DC: < 50 mV

Bit Resolution: 12 bit output reconstruction
8X Oversampling

Signal to Noise: > 65 dB

Frequency Response: \pm 0.1dB to 5.5 MHz

K Factors: < 1%

ScH Phase Error: < \pm 2 degrees

Differential Phase: < 1 degree

Differential Gain: < 1%

General Specifications

Power Consumption: < 10 Watts
Temperature Range: 0 to 40 degrees C ambient (all specs met)
Relative Humidity: 0 to 95% noncondensing
Altitude: 0 to 10,000 ft

Due to ongoing product development, all specifications subject to change.