



User Guide



PSC 400/500

Plura system controller

PBM-4K

PBM-4K-H

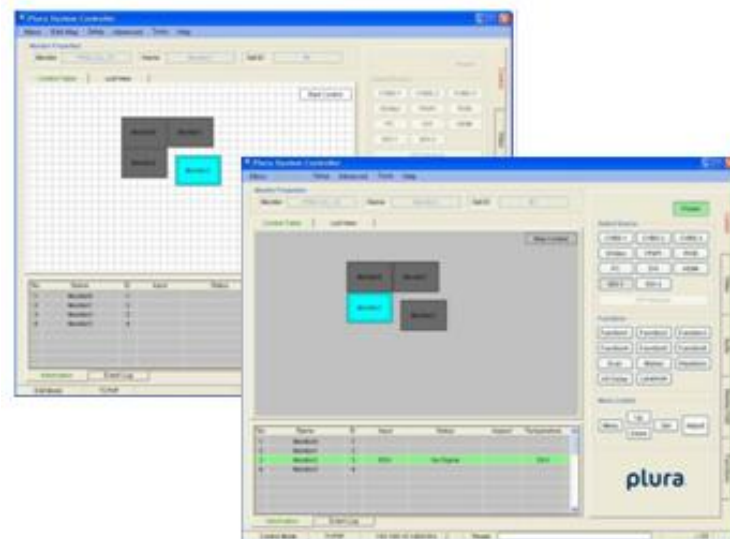
SFP-H-7

SFP-H

LCM-3G

PRM-3G

PBM-3G



I. Introduction to PSC – 400/500

This PC program is designed to be a user friendly method for controlling a large number of Plura broadcasting monitors through RS-232C and TCP/IP interface.

1). Program Functions & Features

- Create & Edit the Plura broadcasting monitor System Controller Map.

This is available to save the layout of the System Controller Map as a file format.

- Control a Large Number of Monitors.

By using the Control Panel it is possible to control one or more monitors.

- Status Display

The status of each Monitor can be displayed.

- Designate Names for Each Monitor

Each monitor can be given a name & ID. Each monitor can show its channel name on screen.

2). System Specifications Required for Operation

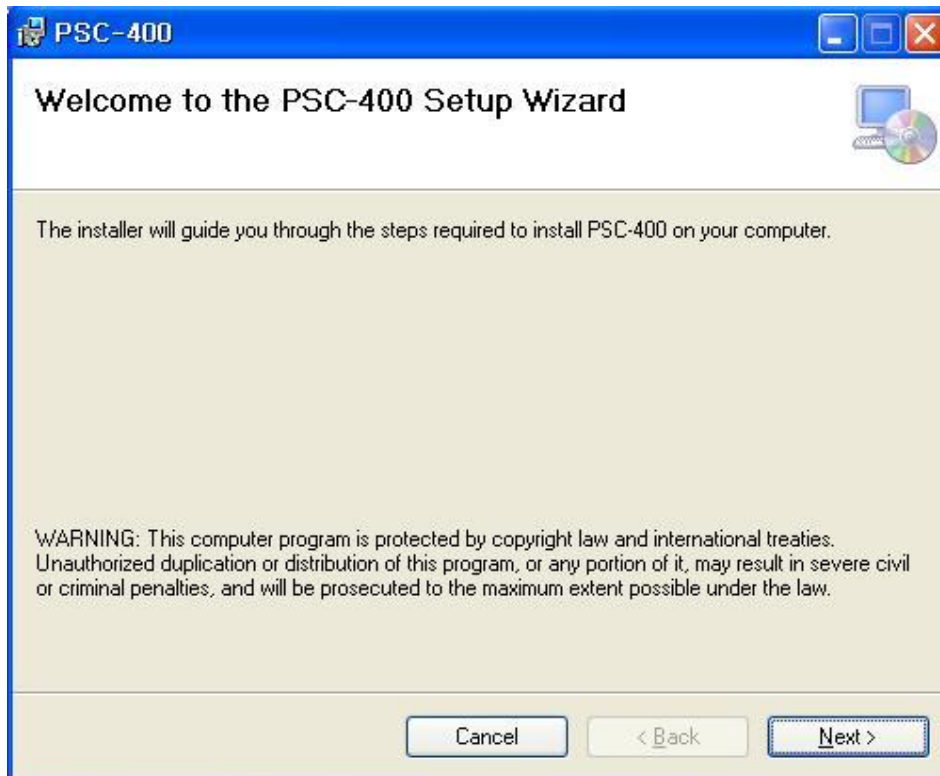
- This program only runs on Windows XP sp2 or above.
- Microsoft .NET framework 4.0 or later.

System Spec & Program can be upgraded & changed at any time for better quality of the program.



II. Installation of PSC – 400/500

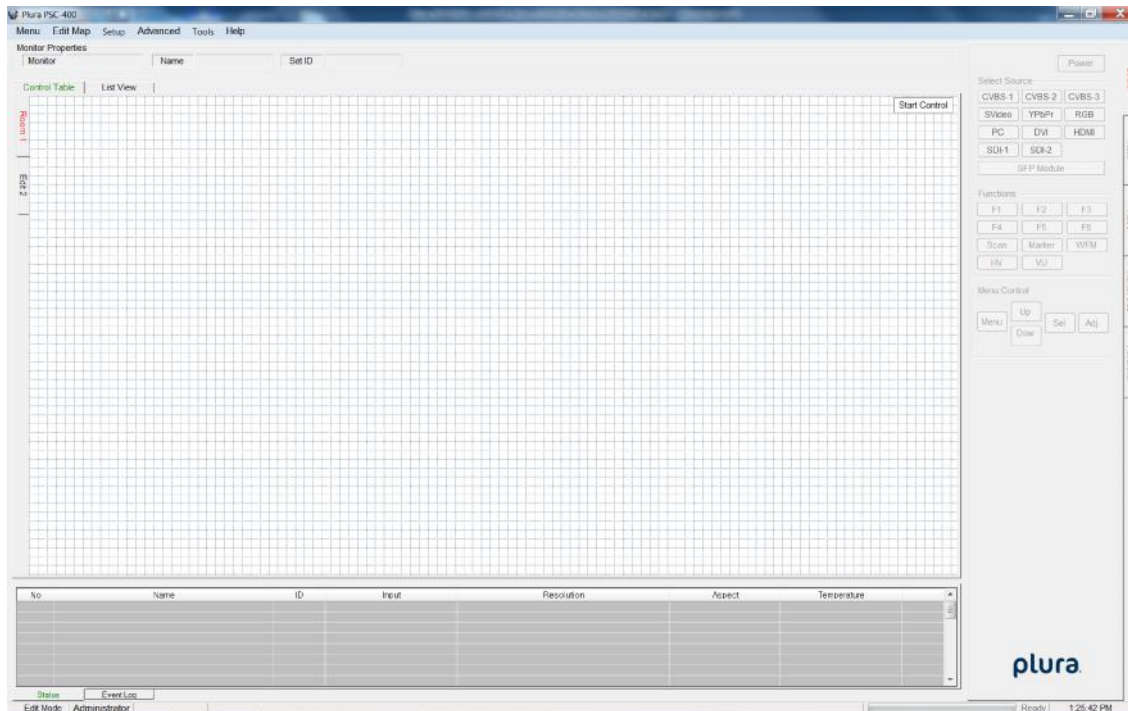
- To install the program on user pc, select “Run” installation file, and follow the “Plura System Controller Setup Wizard” instructions.



After installation is completed, a shortcut button will be shown on the desktop and in the start menu.



III. Contents of PSC – 400/500



1). Menu strip

- a) Menu: Mode, New, Open Map, Save as..., Exit
 - Mode: Edit Map, Start Control
 - New: start a new Map
 - Open Map: Load a control map from a saved file
 - Save as...: Save the control map to file
 - Exit: Exit
- b) Edit Map: Properties, Control Map Wizard, Add Monitor, Delete Monitor, Add Page, Delete Page
 - Properties : Set properties of monitor
 - Control Map Wizard : Easy Set PSC-400 for user
 - Add Monitor : Add one or more monitors
 - Delete Monitor : Delete one or more monitors
 - Add Page : Add one or more pages
 - Delete Page : Delete one or more pages
- c) Setup : User Level, Shortcut Keys, Network Configuration
 - User Level : Select User Level, Administrator // Engineer // Operator
 - Shortcut Keys : Select, Change or Delete Shortcut Keys
 - Network Configuration : Search and select Network adapter



d) Advanced : Function Key, GPI, SFP Module, Video Wall

- Function Key : Read, select or change Function Key
- GPI : Read, select or change GPI Key
- SFP Module : Easy Change SFP Module
- Video Wall : Set Video Wall

e) Tools : FPGA Express, Flash Express

- FPGA Express : Search and select monitor, Download FPGA
- Flash Express : Search and select monitor, Download Firmware

f) Help : About

- About : About PSC-400

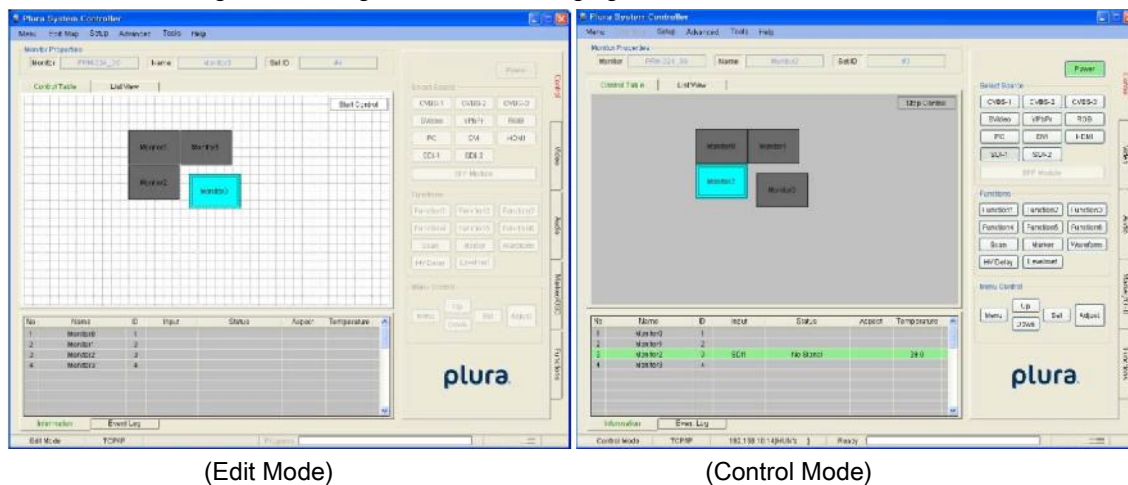
2). Monitor Properties Group

- Displays the selected monitor's model, name and ID.



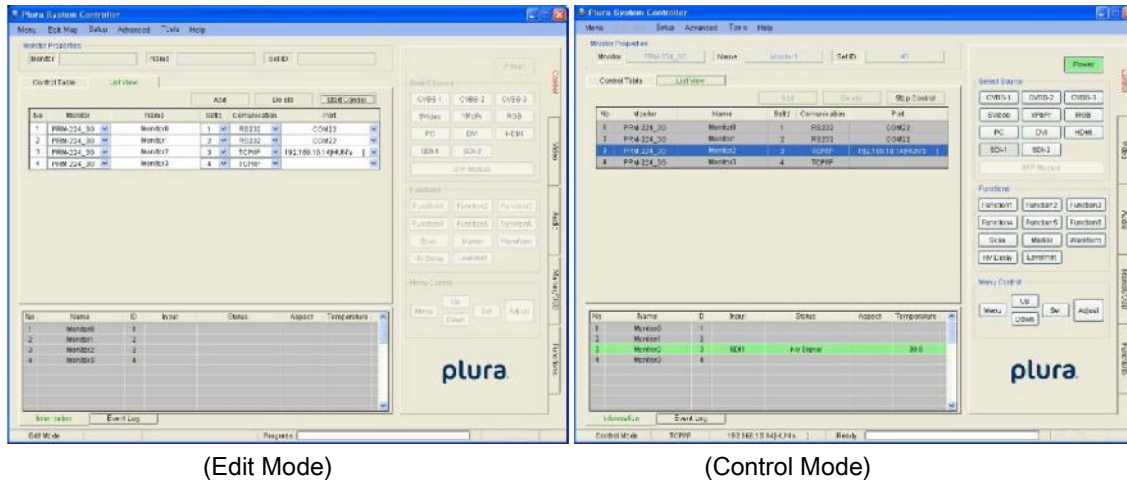
3) Control Table

- Displays currently opened control Map.
- User can edit the control map and control the monitor on this table.
- This table is changed according to the mode changing as below.



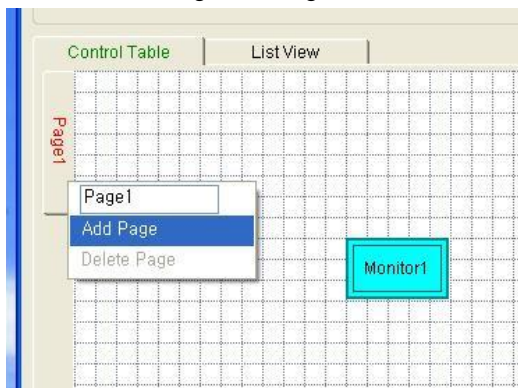
4) List View

- Displays list of currently opened control Map.
- User can edit and control the monitor.



5) Page

- Make more pages, User can control multiple pages
- Click tab and Right-clicking mouse, can make more pages



6) Information

- Displays each monitor's information which is added on control table.
- User can see the Monitor ID, Signal Locking status, Input resolution, Aspect and Board temperature.

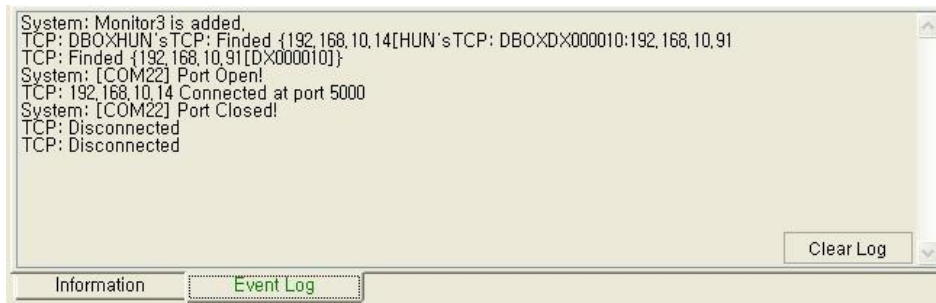
No	Name	ID	Input	Status	Aspect	Temperature
1	Monitor0	1				
2	Monitor1	2				
3	Monitor2	3	SDI1	No Signal		39.0
4	Monitor3	4				

Information Event Log

7) Event Log

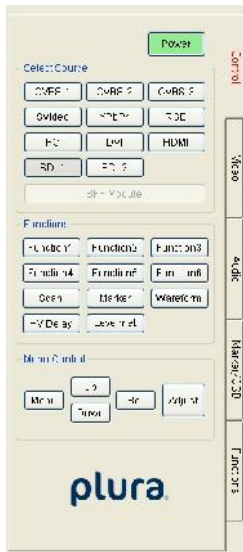
- It shows the major events that occurred in system controller.
- Clear: Clear the log window.



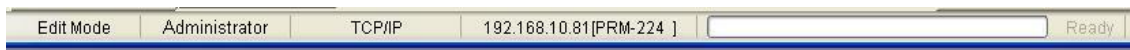


8) Controller Tap

- User can control the monitor easily through this tap.
- Controller Tap is only available when monitor is selected in the control mode.



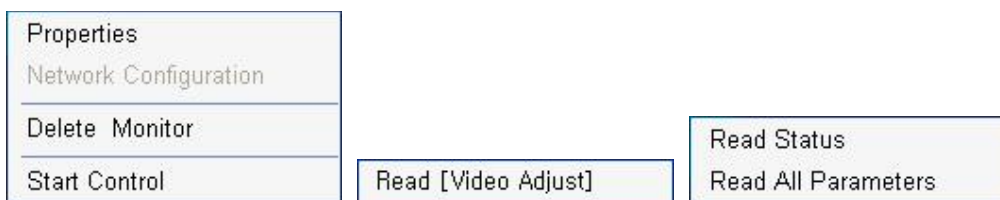
9) Status Bar



- It displays Mode, Interface, Com port or Target IP address, Progress bar and current time.

10) Context Menu

- Right-clicking or Double-clicking on Control Table or Controller Tap will bring up the commands used to control.

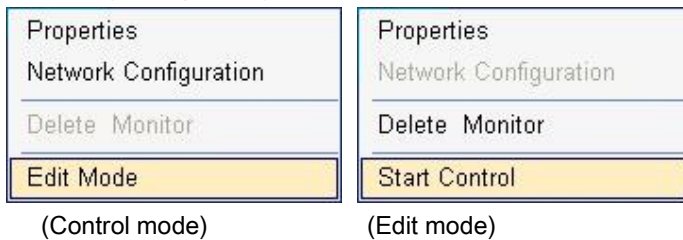


IV. Edit Control Map

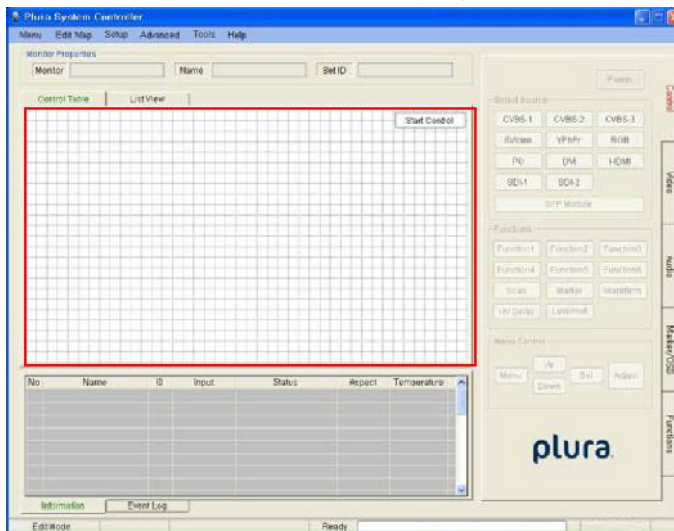
- User can edit the control map in EDIT MODE.
- Edit mode is only to use the Editing map. User cannot control any monitor in this mode.

1) Start Edit Mode

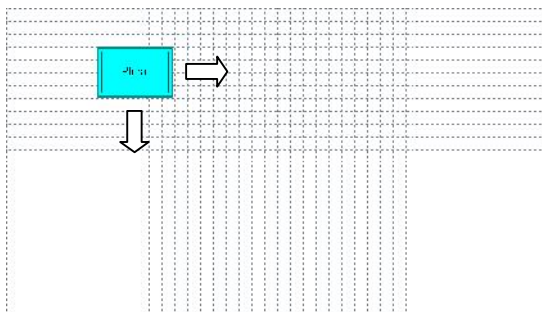
- User can change to edit mode through Mode items on menu strip, context menu on control table or mode changing button on control table.
- Below Context menu strip is opened by mouse right-clicking on the Control Table.
- It is changed depending on status of mode.



- If mode is edit state, Control table is grid pattern as below.

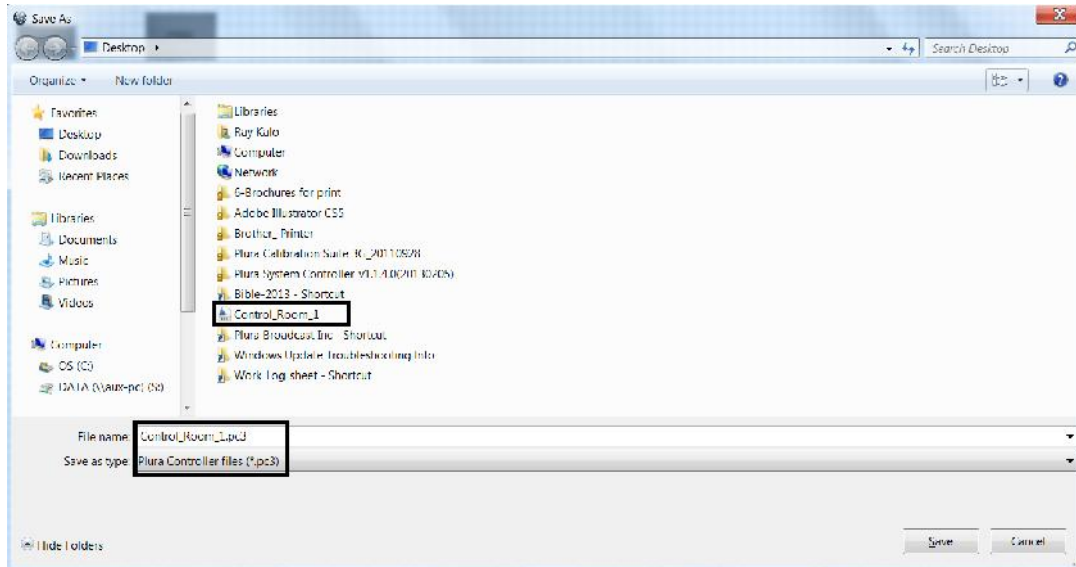


- In control table, user can locate the monitor icon any place.



2) Open and Save Map

- User can save the control map and open the saved one.
- Filename extension is .pc3.



3) Add and Delete monitor

- User can add the monitor for use in control table by Add Monitor form as below.

- User can open the Add Monitor form by the Edit menu or context menu strip on control table.

a) Monitor: Select the target model. Icon size is changed by model.

b) Monitor ID:

- Select the target monitor's ID number.
- If ID is different, User cannot control the monitor.
- Cannot select same ID with other monitors.



c) Name:

- It appears in the center of the monitor icon.
- Cannot make same name with other monitors.

d) Communication: select communication interface between RS232 and TCP/IP.

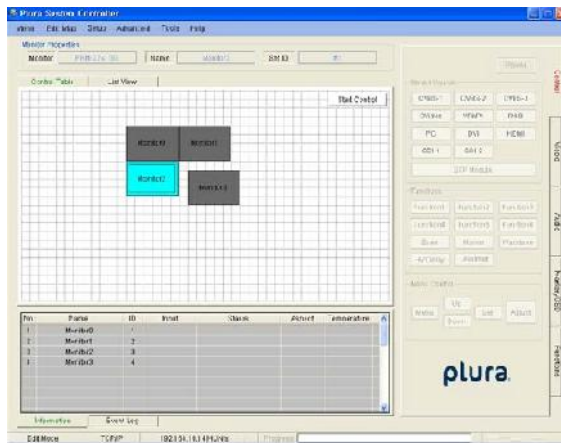
e) Com Port: select RS232 Comport of available in PC.

f) My IP Address: select PC IP address of available in PC..

g) Target IP: select target IP address of linked monitor.

h) Add and Cannel button: Add monitor or cannel the add monitor.

- If monitor is successfully added, user can see the monitor icon on control table and information as bellow.



- User can delete the selected Monitor by Edit item on menu or context menu on control table.

4) Properties

- User can change all properties of selected monitor that already added on control table.

- User can open the properties form of the selected Monitor by Edit item on menu or context menu on control table.

- It is changed depending on the mode

(Edit Mode)

(Control Mode)

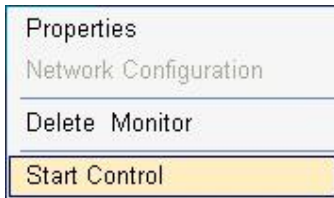


V. Control Mode

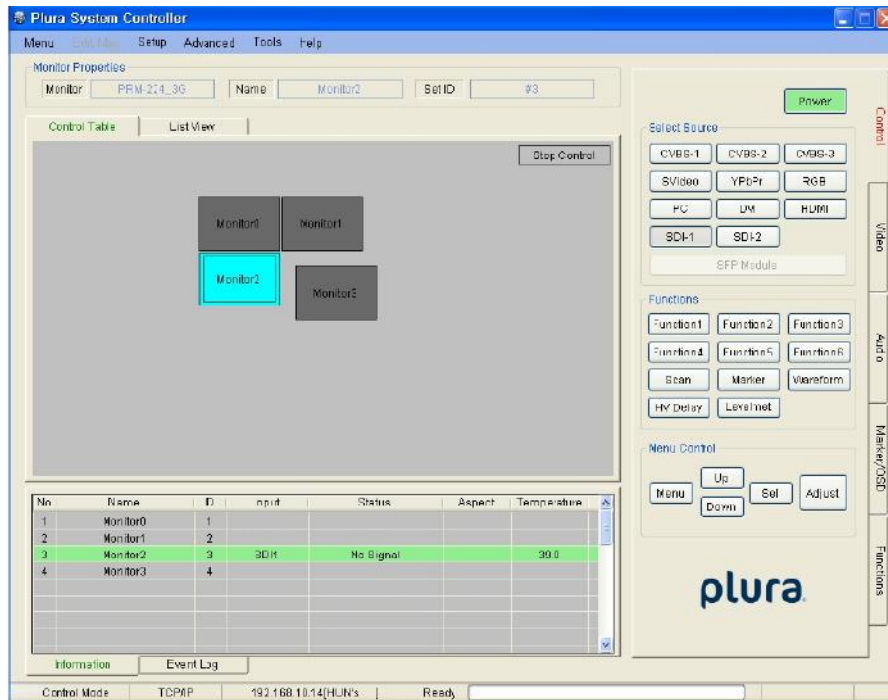
- User can control the selected monitor in this mode.
- Only for control, cannot edit.

1) Start Control

- User can select the control mode through Mode items in menu strip, context menu strip or mode changing button on control table.
- Context menu strip is opened by mouse right-clicking on Control Table.



- If mode is control state, Control table is changed as below.



2) Properties

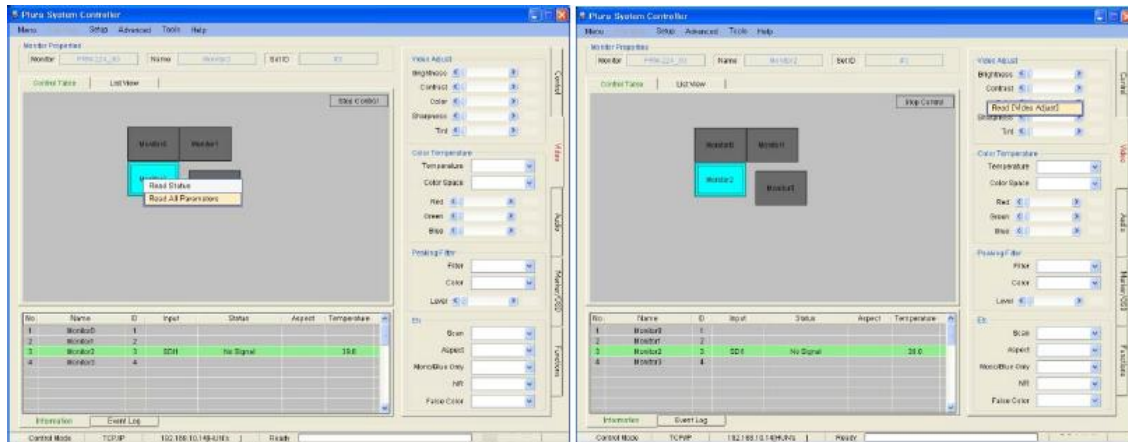
- User can only change ID and name through the properties form in this mode.

Properties form is opened by the Edit menu or context menu.

3) Controller Tap

- User can control the monitor through this tap.
- Controller Tap is only available when monitor is selected in control mode.
- It consists of Control, Video, Audio, Marker/OSD and Functions Tap.
- Each control is changed depending on model type. SFP module is only available in SFP model.

- User can read each parameter's value from target monitor by context menu on control table or group box. Each context menu as below is opened by mouse right-clicking or double-clicking.



(On Icon of Control Table) (On Group Box)

- Read All Parameter: read all of parameter in system controller from selected monitor.
- Read [Video Adjust (Group Box name)]: To open this context menu, use the mouse right button to click in group box.

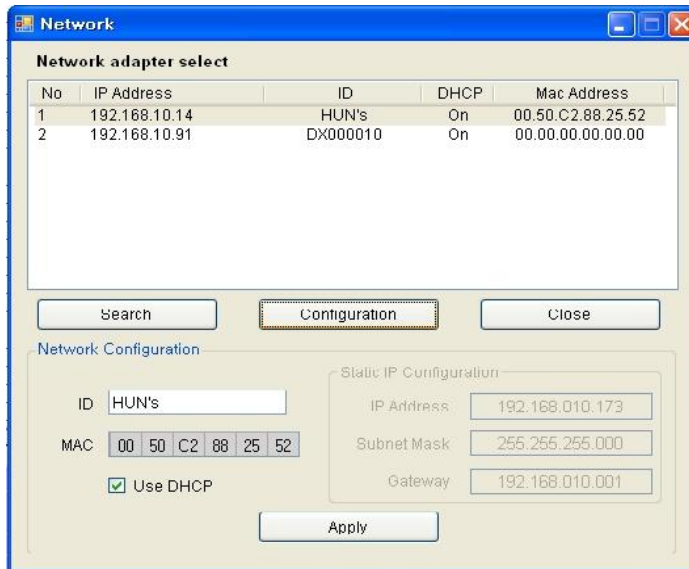
4) Network Configuration

- Use this form to configure the network settings.
- Open the Network form on the Setup menu.

No	IP Address	ID	DHCP	Mac Address
1	192.168.10.14	HUN's	On	00.50.C2.88.25.52
2	192.168.10.91	DX000010	On	00.00.00.00.00.00

- Click the item on list to connect the network board.
- If connected, Configuration button is enabled.
- Network Configuration box is enabled with clicking the Configuration button.





Network adapter select

No	IP Address	ID	DHCP	Mac Address
1	192.168.10.14	HUN's	On	00.50.C2.88.25.52
2	192.168.10.91	DX000010	On	00.00.00.00.00.00

Buttons: Search, Configuration, Close

Network Configuration

ID: HUN's

MAC: 00 50 C2 88 25 52

☒ Use DHCP

Static IP Configuration

IP Address: 192.168.010.173

Subnet Mask: 255.255.255.000

Gateway: 192.168.010.001

Apply

5) Shortcut Keys

- Shortcut keys save user having to click the button.
- User can set up the shortcut keys with this form on Setup menu.



Shortcut Keys

Functions

- Menu
- Up
- Down
- Sel
- Adj
- Function1
- Function2
- Function3
- Function4
- Function5
- Function6

Existing Key

S

Delete


Default

New Key

Apply

6) Function Key

- User can open the Function Key setting form on the Advanced menu.
- Name Button: Same as function key on keypad.
- Combo Box: Select a wanted function. It can be changed depending on the model.



Function Key

Setup

Function 1: Marker Size

Function 2: Audio LV Meter

Function 3: WF/Vector

Function 4: H/V Delay

Function 5: Aspect

Function 6: Mono/Blue Only

Read



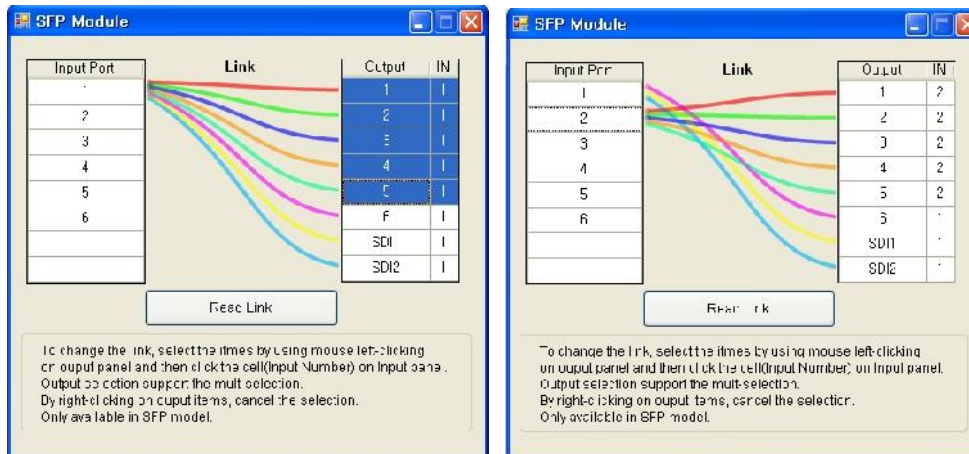
7) GPI

- User can open the GPI setting form on the advanced menu item.
- Setup: User can select GPI function.
- Controller: simulated GPI controller.

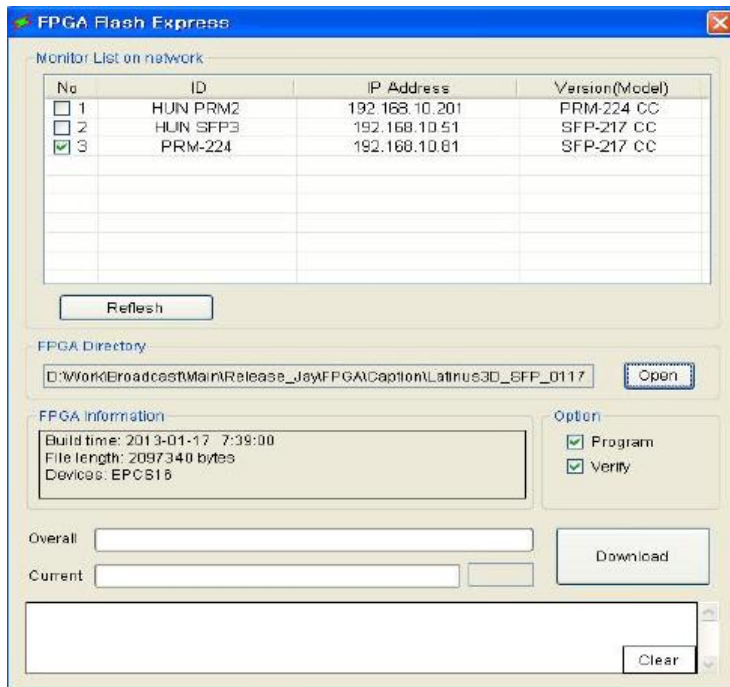


8) SFP Module

- User can open the SFP Module form on the Advanced menu item.
- Only available in SFP model.
- To change the link, select the items by using mouse left-clicking on output panel and the click the cell (input number) on Input panel

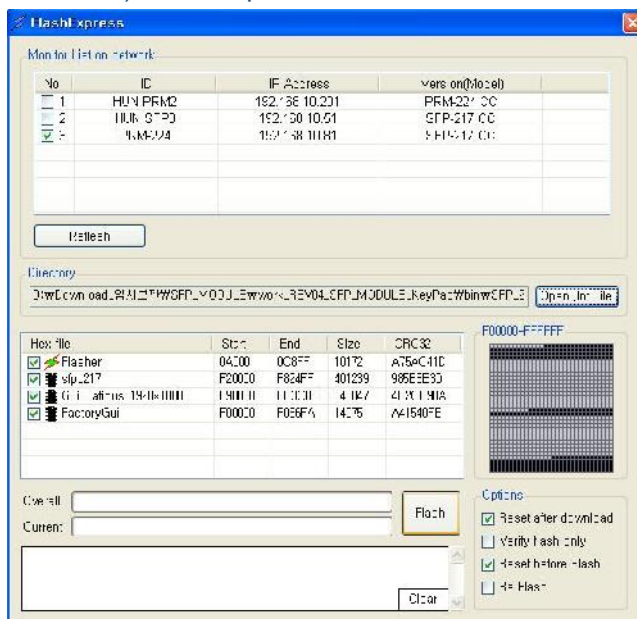


9) FPGA Express



- User can open the FPGA Express on the Tools menu.
- Select Monitor on network, Open FPGA Directory and select FPGA pof file,
- Download FPGA

10) Flash Express

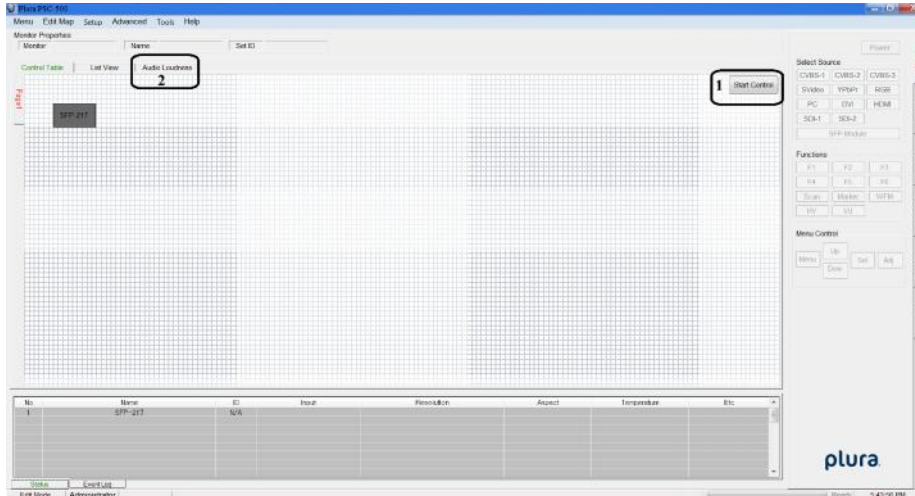


- User can open the FLASH Express on the Tools menu.
- Select Monitor on network, Open Directory and select Firmware inf file,
- Download Firmware

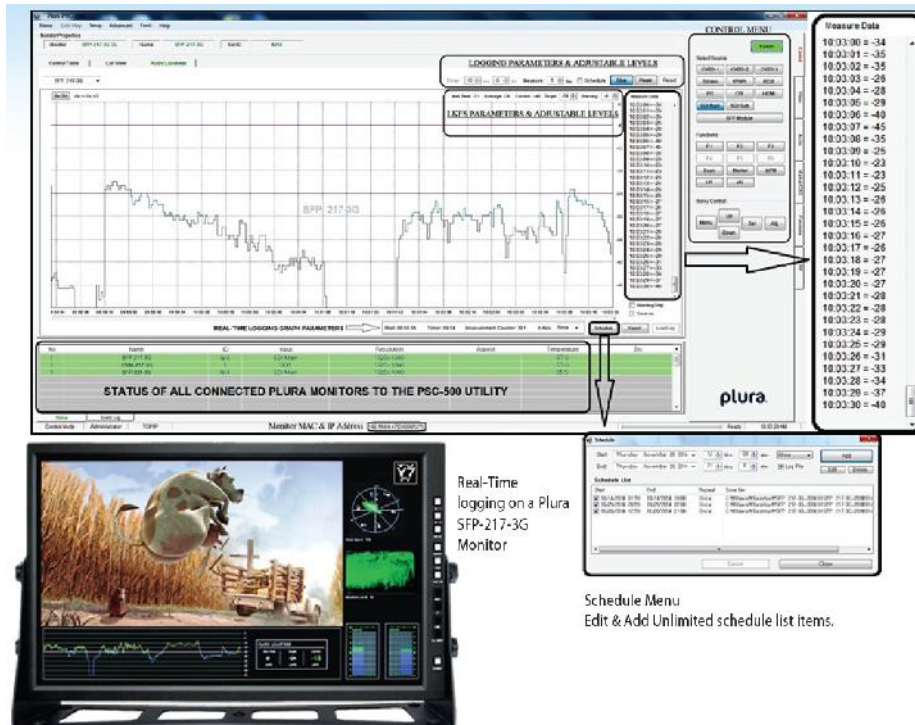


I. Audio Loudness (LKFS) – PSC-500 ONLY

- User can Monitor & Log Audio Loudness for the selected monitor.
- Select start control and then Audio Loudness tabs.



- Select the monitor from the drop down menu to begin monitoring and logging.



Contact Us



Corporate Offices:
Plura Broadcast, Inc.
Ph: +1-602-944-1044
Sales@plurainc.com



Plura Europe GmbH
Ph: +49-6725-918006-70
Sales@plurainc.com

GERMANY



Plura MEA
Ph: +971-50-715-9625
Sales@plurainc.com

U.A.E.



Plura Asia
Ph: +82-10-6688-8826
Sales@plurainc.com

S. KOREA

