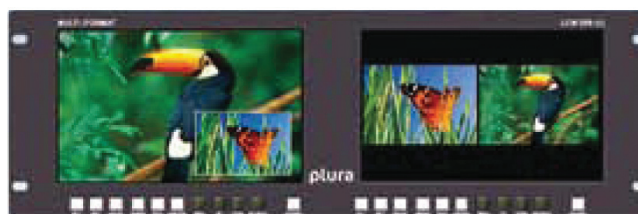




### Affordable General Use Broadcast Monitor



LCM-307-3G (Quadruple 4" Input Displays)



LCM-209-3G (Quadruple 5" Input Displays)

**COST EFFECTIVE MULTI FORMAT 3G HD-SDI BROADCAST MONITOR WITH DUAL DISPLAY AND (PIP) PICTURE IN PICTURE CAPABILITY.**

### LCM-3G Series Product Highlights:

LCM Series consists of high quality HD LCD monitors, specifically designed for use in Broadcast environment ensuring accurate color reproduction in accordance with SMPTE, EBU, REC 709 Broadcast Standards. The standard calibration feature enables gamma, color temperature and white luminance level adjustments to meet all Broadcast standards.

- LCM-307-3G, 2 x 7" 1024 x 600 - 8 bit LED Panels
- LCM-209-3G, 2 x 9" 800 x 480 - 8 bit LED Panels
- LCM-119-3G, 19" 1366x768 - 8 bit LED Panel
- LCM-123-3G, 23" 1920x1080 - 8 bit LED Panel
- LCM-132-3G, 32" 1920x1080 - 8 bit LED Panel
- LCM-147-3G, 47" 1920x1080 - 8 bit LED Panel
- 3Gb/s ready - 1080/60P
- 2 x Auto-detect with active loops (3Gb/s - 1.485Gb/s - 270Mb/s)
- Complies with EBU-2330 TECH, SMPTE-C and ITU-R BT.709 Standards
- (ICAC) - Plura Intelligent Connection for Alignment & Calibration
- RGB, YUV, Y/C, Composite, UXGA, DVI & HDMI(DHCP)
- Cutting edge De-interlacing and Scaling Technology

- Fast Response Time for high motion video
- 12 bit Digital Signal Processing
- 178° Viewing Angle Display
- Color Temperature - User adjustable (11000K TO 3200K)
- Various and User defined Markers Display, Safe Area in HD & SD
- Picture and Picture (PaP), Picture in Picture (PiP) display / Blend
- Third-party TSL Tally systems support
- Underscan / Overscan / Normal / Zoom
- Ethernet & Serial Wall Remote Control
- Intuitive OSD Display, Graphic based, 6 Languages (UNICODE System)
- OPTIONS: Support Ember+ of API for registration and control
- OPTIONS: Rack Mount for (LCM-119-3G)-6RU & (LCM-123-3G)-7RU

Please note that the technical details shown here are provisional specifications ( as of Jan 2021 ) The information is subject to change without notice.



# LCM-3G Series

## WALL CONTROL SOFTWARE VIA ETHERNET AND/OR SERIAL PROTOCOLS

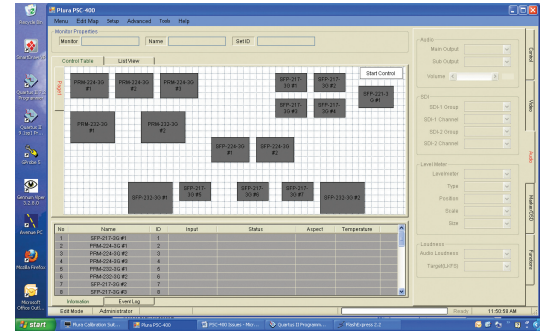
Wall control system is designed to control, operate and update firmware for multiple monitor/s remotely, i.e user can control remotely all features and functionalities of one or multiple monitors over Ethernet or Serial RS 232.

## SUPERIOR BLACK LEVELS & WIDE VIEW ANGLE

Black Color Level Performance <Less 2.5 cd/m2 and Wide Viewing Angle up to 178 degrees. 178 degree.

## DE-INTERLACING AND SCALING TECHNOLOGY

LCM series is equipped with Cutting edge De-Interlacing and Scaling Technology using Motion Adaptive De-Interlacing. This high motion detection accuracy technology greatly improves image quality for both static and fast moving objects. Hardware architecture is very flexible suited to quick installation.



PSC-400 - Plura System Controller



CIRCLE PATTERN

COMPETITORS

LCM Series

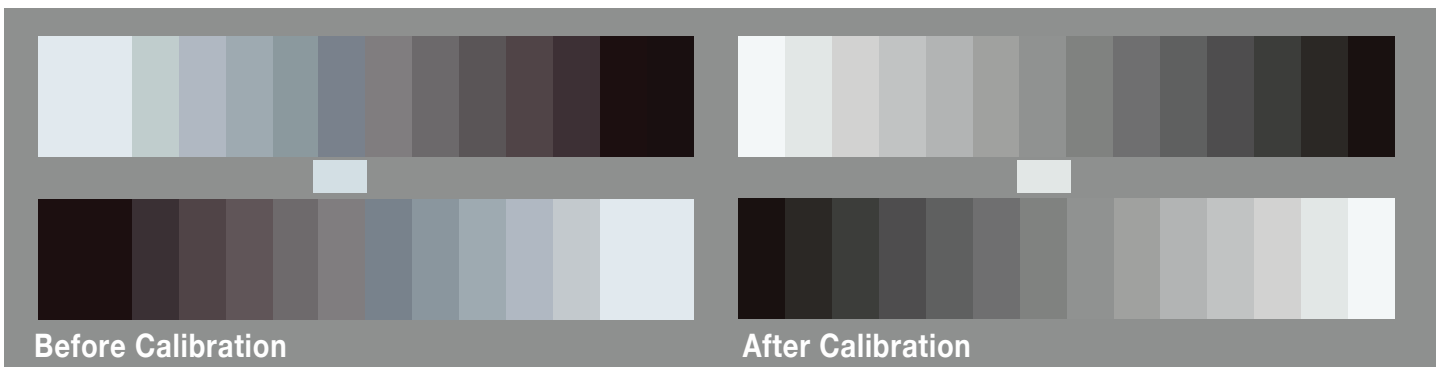


DUAL 3G HD-SDI SIGNAL INTERFACE

## GAMMA AND COLOR TEMPERATURE ADJUSTMENT

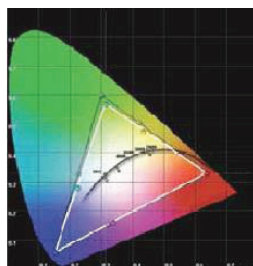
LCM Series can adjust Gamma values between 1.8-3.0 with auto calibration software using Eyeone, K-10, Minolta CA-210, CA-310 or JETIPROBE. Gamma Setting Value:1.8-3.0 Color Temperature Mode:3200K, 5400K, 6500K, 9300K, 11000K, User

LCM -3G Series conforms with 3G HD-SDI, SD-SDI and SMPTE-425 signal formats.



Before Calibration

After Calibration

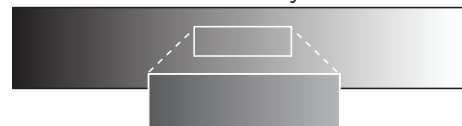


EBU-3325 TECH, ITU-R BT. 709, SMPTE

Conventional Greyscale



10 bit LUT Greyscale





# PBP/PIP, FREEZE AND ZOOM FUNCTIONS WITH TWO 3G HD-SDI INPUTS

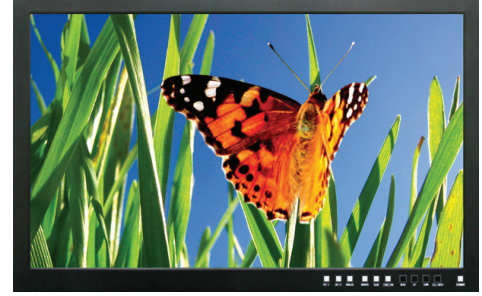
These functions are available with two video side-by-side and picture in picture.



LCM-119-3G



LCM-123-3G



LCM-132-3G

## MULTI-FORMAT SIGNAL

Supports HD/SD-SDI (3GHD-SDI, 1.5 G HD), Composite, Component, VGA, DVI, HDMI with HDCP, RGB and S-Video formats.

## SDI INPUT SIGNAL FORMAT:

SMPTE-425M, SMPTE-274M/SMPTE-372M/SMPTE-296M/SMPTE-260M/SMPTE-125M

## ETHERNET / SERIAL TALLY SUPPORT

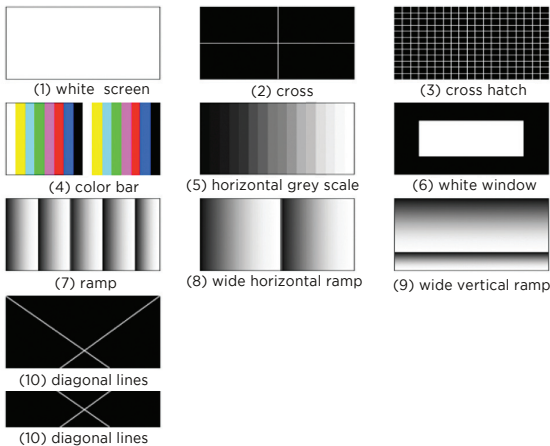
LCM supports and integrates with TSL TallyMan and/or Image Video Tally Systems via Ethernet or Serial protocols.

## AUTO CALIBRATION FUNCTION

LCM series offers auto calibration functionality using Freeware tool. All monitors run through an intensive and full calibration process. LCM series offers accurate luminance uniformity levels and confirm with SMPTE-C, EBU-3325 and REC709 color space standards.

## INTERNAL PATTERN TEST MODE

Various Internal Test Patterns are available through OSD menu.

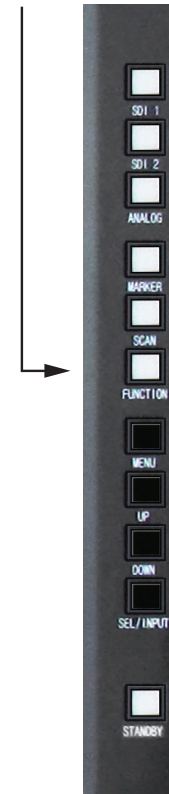
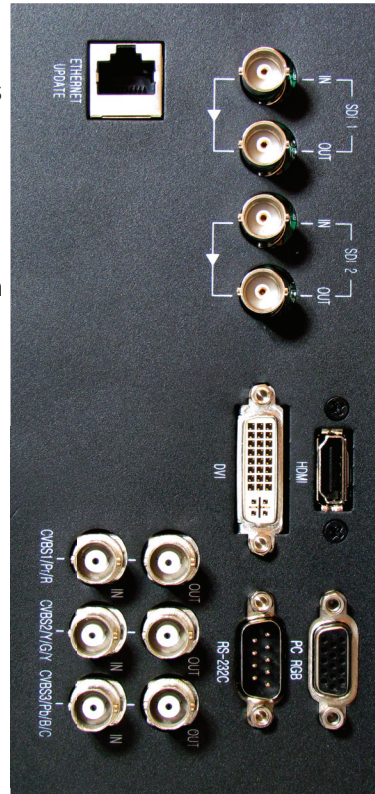


## CONNECTIVITY

3G HD-SDI, HDMI, DVI, CCVS, Component, S-Video

FRONT KEYS ON LCM-132-3G

LCM-119-3G, LCM-123-3G



# LCM-3G-Series Specifications

Function	LCM-307-3G (2x7")	LCM-209-3G (2x9")	LCM-119-3G (19")	LCM-123-3G (23")	LCM-132-3G (32")	LCM-147-3G (47")	
INPUT	HDMI	2 x 1 EA. HDMI In, (With HDCP) 19pin Female		1 EA. HDMI In, (With HDCP) 19pin Female			
	DVI	N.A.		1 EA. DVI In, 24 Pin Female			
	HD/SD-SDI	2 x 2 EA. 3G HD/SD-SDI		2 EA. 3G HD/SD-SDI			
	D-Sub	N.A.		1 EA. RGBHV (VGA) In, 15 Pin Female			
	9 P D -Sub	2 x 2 EA. RS-232 In 9 Pin Male		2 EA. RS-232 In 9 Pin Male			
	BNC	2 x 3 EA. Component In (Y,Pb,Pr)		3 EA. Component In (Y,Pb,Pr)			
	BNC	2 x 2 EA. S-Video In (Y,C)		2 EA. S-Video In (Y,C)			
	BNC	2 x 1 EA. Composite In (CVBS)		1 EA. Composite In (CVBS)			
OUTPUT	HD/SD-SDI	2 x 2 EA. 3G HD/SD-SDI		2 EA. 3G HD/SD-SDI			
	Analog Loop Output	2 x 3 EA. 75 ΩBNC		3 EA. 75 ΩBNC			
INPUT SIGNAL	DVI	N.A.		640 x 480 up to 1920 x 1080.			
	HDMI	H Freq Range : 22-82KHz, V Freq Range : 55-90Hz, 640 x 480 up to 1920 x 1080					
	PC-RGB	640 x 480 up to 1920 x 1080. SOG sync support					
	HD/SDI	3G Signal					
ANALOG INPUT FORMAT	Composite	1.0Vp-p, C : 0.7Vp-p					
	S-Video	Y : 1.0Vp-p, C : 0.7Vp-p					
	Component	Y : 1.0Vp-p, Pb : 0.7Vp-p, Pr : 0.7Vp-p					
	D-Sub	1.0Vpp (with Sync)					
DIGITAL INPUT FORMAT	SMPTE-425M(3G)	1920x1080P (50/60)					
	SMPTE-292M	1920x1080i ( 50/59.94/60 )					
		1920x1080P (30Psf/25Psf/24Psf30/25/24)					
	SMPTE-372M	1080P (30/29.97/25/24/23.98)					
		1080i (29.97/25/24/23.98)					
		720P (60/59.94/50)					
	SMPTE-296M	1280x720P (50/59.94/60)					
	SMPTE-259M/C	480i (59.94)					
	576i (50)						
Component	640 x 480 up to 1920 x 1080p						
DVI, VGA, HDMI INPUT SIGNAL FORMAT		VESA Standard					
		1920 x 1080 (60P,60i,50i)					
		1920 x 1080 (25P,24p,23p)					
I/O PORT	Ethernet Port	RJ-45 8 Pin Ethernet Port, 100Mbps, LAN to Serial Support for Wall Control Application					
	Serial Update	Firmware Update. 9Pin D-sub, Remote, Update, Serial Interface					
COLOR COORDINATE	Color space	EBU, SMPTE-C, IBT-709, NTSC, Native					
LCD	Size	7" ( 2 x LCD)	9" ( 2 x LCD)	19"	23"	32"	47"
	Resolution	1024 x 600 (15:9)	800 X 480 (16:10)	1366 X 768 (16:9)	1920 X 1080 (16:9)	1920 X 1080 (16:9)	1920 X 1080 (16:9)
	Pixel Pitch(V) x (H)	.0.1215x0.1215mm	0.2327x0.2475mm	0.315x0.3315mm	0.2655x0.2655mm	0.3637x0.3637mm	0.5415x0.5415mm
	Color	16.7 M colors	16.7 M colors	16.7 M colors	16.7 M colors	16.7 M colors	16.7 M colors
	Viewing Angle (deg)	R/L: 140, U/D 140	R/L: 140, U/D 140	R/L:178, U/D:178	R/L:178, U/D:178	R/L:178, U/D:178	R/L:178, U/D:178
	Luminance of White	350 cd/m2	350 cd/m2	300 cd/m	300 cd/m	300 cd/m	450 cd/m
	Contrast	700 : 1	700 : 1	1000 : 1	1000 : 1	1000 : 1	4000 : 1
	Response Time	30 msec	30 msec	5.5 msec	10 msec	6 msec	6 msec
	Display Area	152.4 x 91.44mm	196.8 x 118.08mm	430.4x254.6mm	509.76x286.74mm	698.4x392.85mm	
POWER REQUIREMENTS	DC 12 V/5.0A			AC10 0-230V, 50/60Hz			
ATC FOR RELIABILITY	Automatic Temperature Control 80 x 25mm BLDC Cooling Fan						
OPERATING TEMPERATURE & HUMIDITY	0°C - 40°C(32°F- 104 °F) ,20% - 80% RH						
WEIGHT	2.494 KG ( 5.5 lbs)	3.175 KG ( 7.0 lbs)	3.628 KG ( 8 lbs)	4.989 KG ( 11.5 lbs)	13.608 KG ( 30 lbs)	20.4 KG (45 lbs)	
DIMENSION (W*H*D*) w/o Box & Stand	480x127x64mm	480x173.6x64mm	442x263x58mm	551.6x315.6x58mm	733x452x72.6mm	1071.8x626x101mm	
	18.75x5.0x2.0Inch	18.75x6.75x2.0Inch	17.4x10.35x2.28Inch	21.7x12.4x2.28Inch	28.85x17.795x2.85Inch	42.2x24.6x3.94Inch	
Accessories	Rackmount		Rackmount & Wallmount		Wallmount		

Please note that the technical details shown here are provisional specifications (as of Jan 2021) The information is subject to change without notice.

